

Sango[®]
HOSPITALITY



SHOWROOM (INDONESIA)

Merlynn Park Hotel
Jl. KH. Hasyim Ashari No.29-31
Jakarta – Indonesia

SHOWROOM & OFFICE (UK & ITALY)

Churchill Chambers, Churchill Way,
Macclesfield, Cheshire, SK11 6AS,
United Kingdom

Atmosphere Living SRL
Viale IV Novembre, 102
31100 Treviso – Italy

Tel : +62 24 866 0050
Fax : +62 24 866 0047/0049

 Sango Hospitality

 @sangohospitality

 salessupport@sango.com

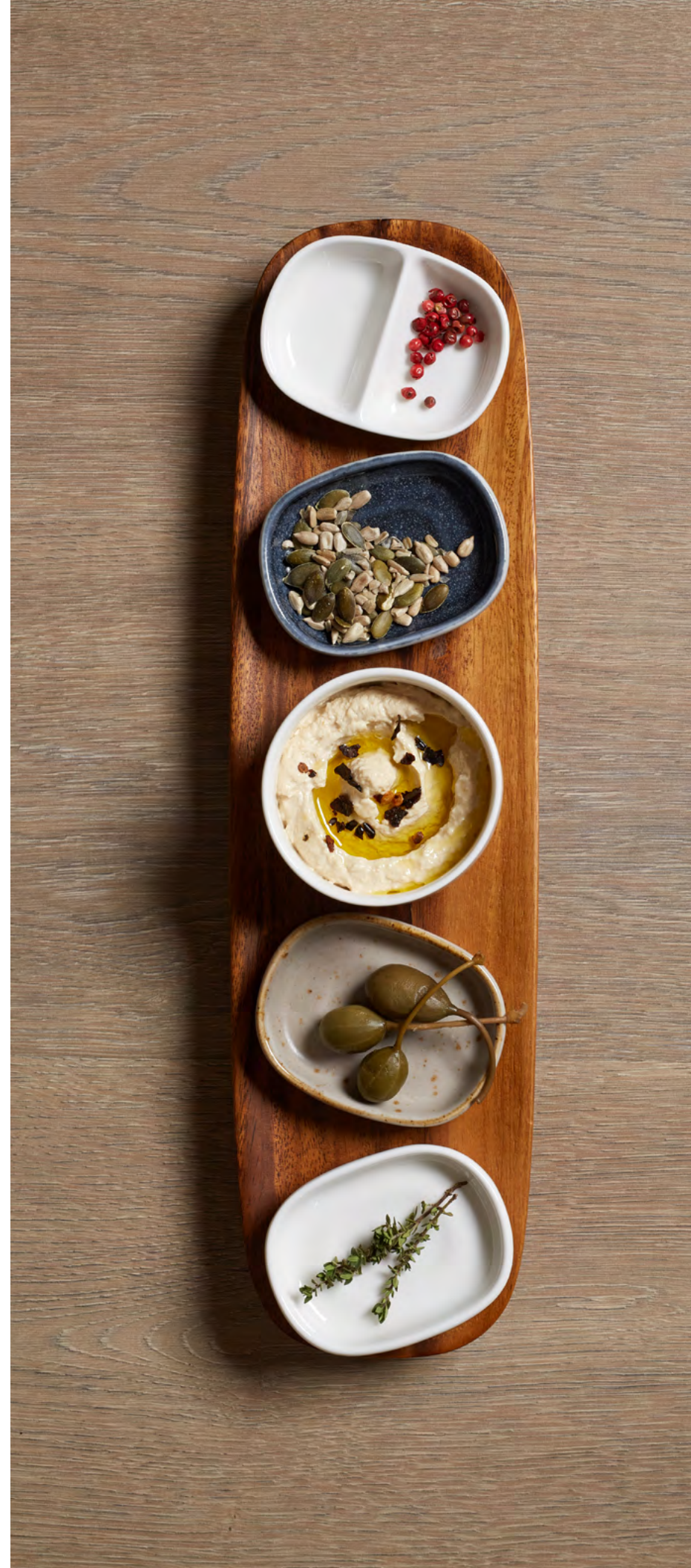
 www.sango-hospitality.com

HEADQUARTER (INDONESIA)

Semarang Plaza 2nd Floor Block B
Jl. H. Agus Salim No.7
Semarang – Indonesia

FACTORY (INDONESIA)

JL Raya Mangkang
Semarang – Indonesia



Welcome to Sango!

Sango is the veritable brand in the international hospitality market offering competitive, stylish products for today's hospitality establishments from 5 star hotels to high volume catering businesses for whom quality, durability, functionality and first class design are an essential factor in food presentation and table top service.

Sango Hospitality is a division of PT Sango, a privately-owned company based in Semarang, Indonesia.

Formed in 1977, PT Sango remains family owned, employing more than 5,000 people at their manufacturing plants in Indonesia with showrooms, offices and warehouses around the world.

The Sango Hospitality collection in the following pages contain a wide range of products including highly durable Classic and Java ceramic tableware, stunning Acacia 'Table Theatre' woodware and stainless steel cutlery/flatware.

The Sango Hospitality collection encompasses all hospitality requirements.

CONTENTS



CLASSIC TABLEWARE	08
ORA WHITE	16
ORA TABA	26
ORA AVOLA	30
ORA FORIO	34
ORA ARICA	38
ORA WOODWARE	42
BAKEWARE BAKEWARE & HOT POT	46
ORA CANAPE CERAMICS & WOODWARE	52
JAVA TABLEWARE	54
KADEN PRESENTATION PLATES	68
WHITE GRAIN TABLEWARE	76
BLACK SLATE STONE SLATE	78
TABLE THEATRE ACACIA WOODWARE	80
METROPOLITAN CUTLERY / FLATWARE	94
URBAN CUTLERY / FLATWARE	98
CARE GUIDE	102







CLASSIC

Tableware

The Sango Classic Hospitality collection combines stylish design with robust durability - a vital factor in high volume catering establishments.

Classic was specifically developed for the hospitality industry using the latest scientific developments in metallised clay bodies and glaze technology.

The result is an extremely durable, lightweight product with high edge-chip resistivity and a high sheen glaze with a strong resistance to scratching and metal marking.

The product is vitreous and complies with BS 4034.

All items in the carefully developed range are designed to be stackable and take up the minimum of storage space - a must in busy kitchens where space is at a premium.

PLATES



01610H WIDE RIM PLATE 17.3cm/6.8"
01710H WIDE RIM PLATE 19cm/7.5"
01810H WIDE RIM PLATE 21.3cm/8.4"
01910H WIDE RIM PLATE 22.9cm/9"
01120H WIDE RIM PLATE 26.1cm/10.3"



01110H WIDE RIM PLATE 28cm/11"
01210H WIDE RIM PLATE 31cm/12.2"



21710H COUPE PLATE 18cm/7.1"
36810 COUPE PLATE 20cm/7.9"
21810H COUPE PLATE 21.7cm/8.5"
21910H COUPE PLATE 24cm/9.4"
36110 COUPE PLATE 26.4cm/10.4"



21110H COUPE PLATE 28cm/11"
67210H DEEP COUPE PLATE 30.1cm/11.9"
01270 COUPE PIZZA PLATE 32.5cm/12.8"

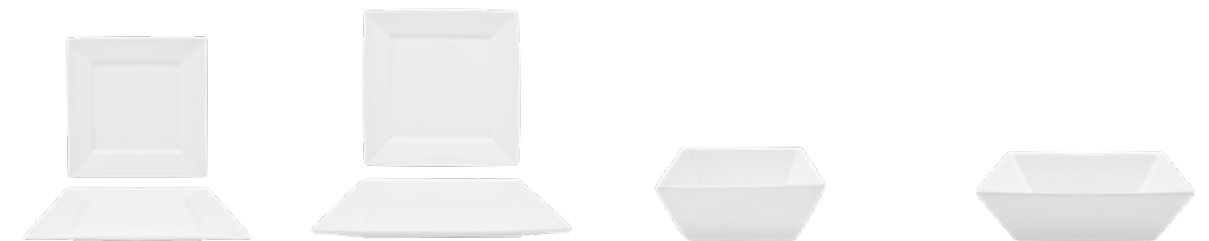
PLATES



01030 RIM OVAL DISH 25.6cm x 16.1cm 10.1" x 6.3"
01230 RIM OVAL DISH 30cm x 21.1cm 11.8" x 8.3"
01430 RIM OVAL DISH 35.5cm x 24.8cm 14" x 9.8"
01530 RIM OVAL DISH 39cm x 28cm 15.4" x 11"



21830H COUPE OVAL PLATTER 20cm x 15cm 7.9" x 5.9"
21930H COUPE OVAL PLATTER 24cm x 18cm 9.4" x 7.1"



45810 SQUARE PLATE 20.8cm/8.2"
45110 SQUARE PLATE 27cm/10.6"
45640 SQUARE BOWL 15cm/5.9" H : 5.2cm/2"
45740 SQUARE BOWL 18.6cm/7.3" H : 5.5cm/2.2"



22810 RECTANGULAR TRAY 21cm x 7.7cm 8.3" x 3"
22110 RECTANGULAR TRAY 25cm x 10cm 9.8" x 3.9"
22130 RECTANGULAR TRAY 34cm x 16cm 13.4" x 6.3"
02430H RECTANGULAR PLATTER 35cm x 23cm 13.8" x 9.1"

BOWLS



60440
RICE BOWL
DIA : 10cm/3.9"
H : 4.7cm/1.9"



21540H
RICE/NOODLE BOWL
DIA : 13cm/5.1"
H : 6.5cm/2.6"



21640H
OATMEAL BOWL
DIA : 16.2cm/6.4"
H : 5cm/2"



36640
COUPE/CEREAL BOWL
DIA : 16.8cm/6.6"
H : 6cm/2.4"



33840
NOODLE BOWL 50cl/16.9oz
DIA : 17.5cm/6.9"
H : 5.5cm/2.2"



36840
COUPE/SALAD BOWL
DIA : 22.5cm/8.9"
H : 6cm/2.4"



01920H
RIM SOUP 22.8cm/9"
H : 4.2cm/1.7"
CAPACITY : 32cl/11oz



01020H
PASTA BOWL 25cm/9.8"
H : 6cm/2.4"
CAPACITY : 45cl/16oz



17020H
PASTA BOWL 28cm/11"
H : 7cm/2.8"
CAPACITY : 75cl/25.3oz



01220H
PASTA BOWL 30cm/11.9"
H : 7cm/2.8"
CAPACITY : 80cl/28oz

CUPS, SAUCERS AND TEAPOTS



01101H
ESPRESSO CUP
8cl/2.8oz
DIA : 6.7cm/2.6"
H : 6cm/2.4"

SAUCER :
17102



01301H
TEACUP/SMALL CAPPUCCINO CUP
20cl/6.7oz
DIA : 10cm/3.9"
H : 5.8cm/2.3"

SAUCER :
01602H



01201H
CUP (STACKABLE)
20cl/7oz
DIA : 8cm/3.1"
H : 6.5cm/2.6"

SAUCER :
01202H



01401H
COFFEE CUP
23cl/8oz
DIA : 8cm/3.1"
H : 9cm/3.5"

SAUCER :
01202H



01601H
BREAKFAST/CAPPUCCINO CUP
28cl/9.4oz
DIA : 10.7cm/4.2"
H : 6.7cm/2.6"

SAUCER :
01602H



17102
ESPRESSO SAUCER
12.2cm/4.8"



01602H
UNIVERSAL SAUCER
15.7cm/6.2"



01202H
TEA/COFFEE SAUCER
15cm/5.9"



01801H TH
CREAM SOUP CUP WITHOUT
HANDLE 23cl (STACKABLE)
DIA : 11cm/4.3"
H : 5.2cm/2"

SAUCER :
01202H



01801 H
CREAM SOUP CUP WITH HANDLE
23cl (STACKABLE)
DIA : 11cm/4.3"
H : 5.2cm/2"

SAUCER :
01202H



01801H NH
CREAM SOUP CUP WITH HANDLE
23cl (STACKABLE)
DIA : 11cm/4.3"
H : 5.2cm/2"

SAUCER :
01202H



01501H
MUG
29cl/9.8oz
DIA : 7.7cm/3.0"
H : 11.5cm/4.5"



01901H
MUG
31cl/10.4oz
DIA : 9cm/3.5"
H : 11cm/4.3"



01663/4H
TEAPOT 2CUP 46cl/16oz
DIA : 11.3cm/4.4"



01763/4H
TEAPOT 4-6CUP 80cl/27oz
DIA : 12.5cm/4.9"



70663/4
TEA POT WITH LID 90cl/30.4oz
DIA : 15cm/5.9"

ACCESSORIES



01280H SALT DIA : 3.7cm/1.5" H : 7.5cm/3.0"	01380H PEPPER DIA : 3.7cm/1.5" H : 7.5cm/3.0"	60310 SOY SAUCE DISH 4.5cl/1.5oz DIA : 6.7cm/2.6" H : 1.6cm/0.6"	60411 YIN YANG DISH DIA : 9cm/3.5" H : 2.3cm/0.9"
---	---	--	---



60190 DIVIDED DIP BOWL 8.8cm W x 6.3cm D x 2.3cm H 3.5" W x 2.5" D x 0.9" H	60390 TRIPLE DIVIDED DIP BOWL 14.2cm W x 8.1cm D x 2.5cm H 5.6" W x 3.2" D x 1.0"	01260H SOY SAUCE DISH/DIP POT DIA : 6.3cm/2.5" H : 3.5cm/1.4"	01160H BUTTER PAT DIA : 6.5cm/2.6" H : 3cm/1.2"
---	---	---	---



55160 SUGAR PACKET HOLDER 8cm W x 6.2cm D x 4.3cm H 3.1" W x 2.4" D x 1.7" H	01301H TH OPEN SUGAR BOWL/DIP BOWL DIA : 10cm/3.9" H : 5.8cm/2.3"	01301/4H TH COVERED SUGAR BOWL DIA : 10cm/3.9" H : 7.8cm/3.1"	01360H CREAM TOT 4.5cl/1.5oz DIA : 3.5cm/1.4" H : 5.5cm/2.2"
--	---	---	--



01103H EGG CUP DIA : 4.5cm/1.8" H : 4cm/1.6"	01103/4H MUSTARD POT WITH LID DIA : 4.5cm/1.8" H : 6cm/2.4"	01460H SMALL GRAVY/SAUCE BOAT 13cl/4.6oz DIA : 7.5cm/3" H : 4.5cm/1.8"	01561 SAUCE BOAT 19cl/6.7oz 18.5cm W x 6cm D x 5cm H 7.3" W x 2.4" D x 2" H
--	---	--	---



01550H JUG 18cl/6.3oz DIA : 5cm/2" H : 8cm/3.1"	01560H JUG 30cl/10.6oz DIA : 8cm/3.1" H : 10.8cm/4.3"	05360 BUD VASE DIA : 3.5cm/1.4" H : 13.5cm/5.3"
---	---	---

ACCESSORIES



88170 CANAPE SPOON A 10cm W x 4cm D x 3cm H 3.9" W x 1.6" D x 1.2" H	88270 CANAPE SPOON B 10.5cm W x 5.5cm D x 5.5cm H 4.1" W x 2" D x 2" H	44170 DUCK SPOON 12.7cm W x 1.4cm D x 4.6cm H 5.8" W x 0.6" D x 1.8" H	44570 DUCK SPOON/CHOPSTICK REST 9.8cm W x 7.6cm D x 1.9cm H 3.9" W x 3" D x 0.7" H	02190 CHOPSTICK REST 5.7cm W x 1.6cm D x 1.4cm H 2.2" W x 0.6" D x 0.6" H
--	--	--	--	---



05240 TOOTHPICK HOLDER DIA : 4.3cm/1.7" H : 4cm/1.6"	05090N ASHTRAY DIA : 10cm/3.9" H : 3.2cm/1.3"	90163/4 SOY SAUCE/VINEGAR POT 16cl 10cm W x 8cm D x 12cm H 3.9" W x 3.1" D x 4.7" H
--	---	---



90443/4 DOUBLE BOILED SOUP WITH LID 23cl/7.8oz DIA : 9.8cm/3.9" H : 7cm/2.8"	25241/2/4 CHA-PEI/SAUCER WITH LID 11.5cl/3.9oz DIA : 8.5cm/3.3" H : 4.6cm/1.8"	70743/4 CASSEROLE WITH LID 120cl/40.6oz DIA : 21.5cm/8.5" H : 7.1cm/2.8"
--	--	--

SAUCER : 25242	SAUCER : 25242
--------------------------	--------------------------



25242 SAUCER 17cm/6.7"



ORA

Tableware
For Today and Everyday

PT Sango are a major player in the hospitality market with a reputation for world class design and service, offering competitively priced, stylish tableware with quality, durability and functionality for food presentation.

In collaboration with the world renowned Studio Levien London, with extensive research and in depth design work, we are delighted to present ORA - a full range of tableware in a resilient high-alumina ceramic body and sustainable Acacia woodware.

The brief to Studio Levien was for a distinctive, organic design. The result is ORA which is the Latin name for beach. Taking inspiration from sea washed pebbles, the shapes reflect this across the whole range.

ORA is available in an elegant creamy white body with a high sheen metal marking resistant glaze and also in a range of coloured stoneware reflecting the demand for a more rustic individual style in the current catering and hospitality market. Each of the coloured glaze ranges take their names from beaches around the world.

The Acacia woodware shapes echo the organic feel of the collection and work well as stand alone pieces or in conjunction with the ceramic pieces to present a stylish tabletop setting at home in any establishment .



ORA

WHITE



ORA

WHITE



88310
CHARGER PLATE
33.5cm x 29.5cm/13.2" x 11.6"



88110SQ
DINNER PLATE
28.5cm x 25cm/11.2" x 9.8"



88920
RIM SOUP/PASTA BOWL
24cm x 21cm/9.4" x 8.3"



88810SQ
SALAD/DESSERT PLATE - LARGE
23cm x 20cm/9.1" x 7.9"



88510SQ
SALAD/DESSERT PLATE - MEDIUM
20cm x 17.5cm/7.9" x 6.9"



88410
BREAD & BUTTER/SIDE PLATE - SMALL
17cm x 15cm/6.7" x 5.9"



88110RD
DINNER PLATE ROUND
26.5cm/10.4"



88810RD
SALAD/DESSERT PLATE ROUND
20.5cm/8.1"



88610
BREAD & BUTTER/SIDE PLATE ROUND
17cm/6.7"



ORA

WHITE



88040
DINNER BOWL
28.5cm x 25cm/11.2" x 9.8"



88740
PASTA BOWL SMALL
26cm x 23cm/10.2" x 9.1"



88060
EGG PLATE
20.5cm x 14.5cm/8.1" x 5.7"



88940
SERVING BOWL
23cm W x 20cm D x 8cm H
9.1" W x 7.9" D x 3.1" H



88840
LARGE NOODLE BOWL/SERVING BOWL
DIA : 21cm/8.3"
H : 8.3cm/3.3"



88640
INDIVIDUAL SALAD BOWL
17cm W x 15cm D x 7cm H
6.7" W x 5.9" D x 2.8" H



88540
SOUP/CEREAL/
SMALL NOODLE BOWL
DIA : 13.5cm/5.3"
H : 6.9cm/2.7"



88340
DIP BOWL
DIA : 8cm/3.1"
H : 4.3cm/1.7"



88250
SERVING PLATTER EXTRA LARGE (FLAGSHIP)
38cm x 31.5cm/15" x 12.4"



88210
PLATTER LARGE
33cm x 23cm/13" x 9.1"



88910
PLATTER MEDIUM
27cm x 19cm/10.6" x 7.5"



88710
PLATTER SMALL
21.5cm x 15cm/8.5" x 5.9"

ORA

WHITE



88501
CAPPUCCINO CUP
40cl/13.5oz
DIA : 10.4cm/4.1"
H : 6.9cm/2.7"



88101
TEA/COFFEE CUP
27.5cl/9.3oz
DIA : 9.7cm/3.8"
H : 6cm/2.4"



88301
ESPRESSO CUP
9.5cl/3.2oz
DIA : 6.5cm/2.6"
H : 5cm/2"



88201
TEA CUP STACKABLE
20cl/6.8oz
DIA : 8.3cm/3.3"
H : 5.7cm/2.2"



88401
COFFEE CUP STACKABLE
14cl/4.7oz
DIA : 7.5cm/3"
H : 5.2cm/2"

SAUCER :
88502

SAUCER :
88502

SAUCER :
88302

SAUCER :
88202

SAUCER :
88402



88502
TEA/COFFEE SAUCER
17cm/6.7"



88302
ESPRESSO SAUCER
12.7cm/5"



88202
TEA SAUCER STACKABLE
15.2cm/6"



88402
COFFEE SAUCER STACKABLE
13.8cm/5.4"



88863/4
TEAPOT LARGE
4-6 CUP 120cl/40.6oz
DIA : 24.7cm/9.7"



88663/4
TEAPOT SMALL
2 CUP 80cl/27.1oz
DIA : 22cm/8.7"



88601
MUG LARGE 65cl/22oz
DIA : 10cm/3.9"
H : 11.9cm/4.7"



88701
MUG REGULAR 35cl/11.8oz
DIA : 8.5cm/3.3"
H : 9.4cm/3.7"

ORA

WHITE



88260
CREAMER NO HANDLE - SMALL
6cl/2oz
6cm W x 4.8cm D x 5.3cm H
2.3" W x 1.9" D x 2.1" H



88360
CREAMER NO HANDLE - LARGE
18.5cl/6.3oz
8.3cm W x 6.5cm D x 7.3cm H
3.3" W x 2.6" D x 2.9" H



88460
CREAMER WITH HANDLE
30cl/10.1oz
13.3cm W x 7.7cm D x 8.5cm H
5.2" W x 3" D x 3.3" H



88163/4
COVERED SUGAR BOWL
9.4cm W x 9.4cm D x 8.3cm H
3.7" W x 3.7" D x 3.2" H



88160
SUGAR PACK HOLDER
8.6cm W x 6.7cm D x 4.6cm H
3.4" W x 2.6" D x 1.8" H



88180
SALT
8.1cm x 6.6cm
3.2" x 2.6"



88380
PEPPER
8.1cm x 6.6cm
3.2" x 2.6"



88650
DIVIDED DISH/OPEN SALT & PEPPER
8.6cm x 6.7cm
3.4" x 2.6"



88190
OIL & VINEGAR DISH
8.6cm x 6.7cm
3.4" x 2.6"



88751
BUTTER DISH
7.3cm W x 5.6cm D x 2.8cm H
2.9" W x 2.2" D x 1.1" H



88390
BUD VASE (TALL)
7.2cm W x 6.4cm D x 11.6cm H
2.8" W x 2.5" D x 4.6" H



88290
BUD VASE (LOW)
7.9cm W x 6.2cm D x 6.6cm H
3" W x 2.4" D x 2.6" H



88351
TRIPLE DIVIDED DISH
11.4cm x 6.7cm
4.5" x 2.6"



ORA

TABA

TABA



88310 TA
CHARGER PLATE
33.5cm x 29.5cm/13.2" x 11.6"

88110SQ TA
DINNER PLATE
28.5cm x 25cm/11.2" x 9.8"

88810SQ TA
SALAD/DESSERT PLATE - LARGE
23cm x 20cm/9.1" x 7.9"

88510SQ TA
SALAD/DESSERT PLATE - MEDIUM
20cm x 17.5cm/7.9" x 6.9"



88740 TA
PASTA BOWL SMALL
26cm x 23cm/10.2" x 9.1"

88840 TA
LARGE NOODLE BOWL/SERVING BOWL
DIA : 21cm/8.3"
H : 8.3cm/3.3"

88640 TA
INDIVIDUAL SALAD BOWL
17cm W x 15cm D x 7cm H
6.7" W x 5.9" D x 2.8" H

88540 TA
SOUP/CEREAL/SMALL NOODLE BOWL
DIA : 13.5cm/5.3"
H : 6.9cm/2.7"



88210 TA
PLATTER LARGE
33cm x 23cm/13" x 9.1"

88910 TA
PLATTER MEDIUM
27cm x 19cm/10.6" x 7.5"

88710 TA
PLATTER SMALL
21.5cm x 15cm/8.5" x 5.9"

88920 TA
RIM SOUP/PASTA BOWL
24cm x 21cm/9.4" x 8.3"

TABA



88501 TA
CAPPUCCINO CUP
40cl/13.5oz
DIA : 10.4cm/4.1"
H : 6.9cm/2.7"
SAUCER :
88502 TA

88101 TA
TEA/COFFEE CUP
27.5cl/9.3oz
DIA : 9.7cm/3.8"
H : 6cm/2.4"
SAUCER :
88502 TA

88301 TA
ESPRESSO CUP
9.5cl/3.2oz
DIA : 6.5cm/2.6"
H : 5cm/2"
SAUCER :
88302 TA

88701 TA
MUG REGULAR
35cl/11.8oz
DIA : 9cm/3.3"
H : 10cm/3.7"



88502 TA
TEA/COFFEE SAUCER
17cm/6.7"

88302 TA
ESPRESSO SAUCER
12.7cm/5"

88351 TA
TRIPLE DIVIDED DISH
11.4cm x 6.7cm
4.5" x 2.6"

88650 TA
DIVIDED DISH/OPEN SALT & PEPPER
8.6cm x 6.7cm
3.4" x 2.6"



88180 TA
SALT
8.1cm x 6.6cm
3.2" x 2.6"

88380 TA
PEPPER
8.1cm x 6.6cm
3.2" x 2.6"

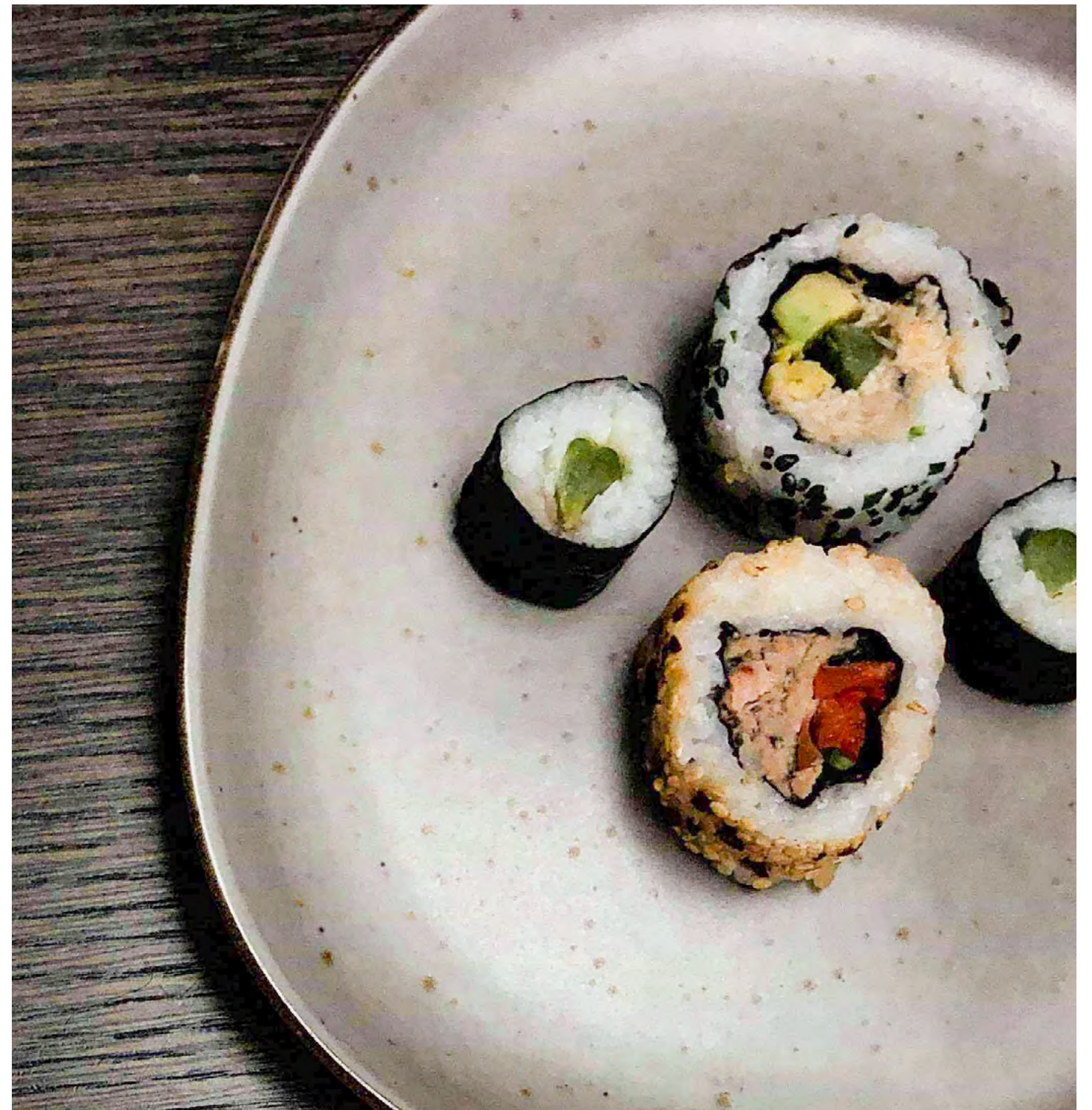
88751 TA
BUTTER DISH
7.3cm W x 5.6cm D x 2.8cm H
2.9" W x 2.2" D x 1.1" H

88190 TA
OIL & VINEGAR DISH
8.6cm x 6.7cm
3.4" x 2.6"



88260 TA
CREAMER NO HANDLE - SMALL
6cl/2oz
6cm W x 4.8cm D x 5.3cm H
2.3" W x 1.9" D x 2.1" H

88360 TA
CREAMER NO HANDLE - LARGE
18.5cl/6.3oz
8.3cm W x 6.5cm D x 7.3cm H
3.3" W x 2.6" D x 2.9" H



ORA

AVOLA

ORA

AVOLA



88310 AV
CHARGER PLATE
33.5cm x 29.5cm/13.2" x 11.6"

88110SQ AV
DINNER PLATE
28.5cm x 25cm/11.2" x 9.8"

88810SQ AV
SALAD/DESSERT PLATE - LARGE
23cm x 20cm/9.1" x 7.9"

88510SQ AV
SALAD/DESSERT PLATE - MEDIUM
20cm x 17.5cm/7.9" x 6.9"



88740 AV
PASTA BOWL SMALL
26cm x 23cm/10.2" x 9.1"

88840 AV
LARGE NOODLE BOWL/SERVING BOWL
DIA : 21cm/8.3"
H : 8.3cm/3.3"

88640 AV
INDIVIDUAL SALAD BOWL
17cm W x 15cm D x 7cm H
6.7" W x 5.9" D x 2.8" H

88540 AV
SOUP/CEREAL/SMALL NOODLE BOWL
DIA : 13.5cm/5.3"
H : 6.9cm/2.7"



88210 AV
PLATTER LARGE
33cm x 23cm/13" x 9.1"

88910 AV
PLATTER MEDIUM
27cm x 19cm/10.6" x 7.5"

88710 AV
PLATTER SMALL
21.5cm x 15cm/8.5" x 5.9"

88920 AV
RIM SOUP/PASTA BOWL
24cm x 21cm/9.4" x 8.3"

ORA

AVOLA



88501 AV
CAPPUCCINO CUP
40cl/13.5oz
DIA : 10.4cm/4.1"
H : 6.9cm/2.7"

88101 AV
TEA/COFFEE CUP
27.5cl/9.3oz
DIA : 9.7cm/3.8"
H : 6cm/2.4"

88301 AV
ESPRESSO CUP
9.5cl/3.2oz
DIA : 6.5cm/2.6"
H : 5cm/2"

88701 AV
MUG REGULAR
35cl/11.8oz
DIA : 9cm/3.3"
H : 10cm/3.7"

SAUCER :
88502 AV

SAUCER :
88502 AV

SAUCER :
88302 AV



88502 AV
TEA/COFFEE SAUCER
17cm/6.7"

88302 AV
ESPRESSO SAUCER
12.7cm/5"

88351 AV
TRIPLE DIVIDED DISH
11.4cm x 6.7cm
4.5" x 2.6"

88650 AV
DIVIDED DISH/OPEN SALT & PEPPER
8.6cm x 6.7cm
3.4" x 2.6"



88180 AV
SALT
8.1cm x 6.6cm
3.2" x 2.6"

88380 AV
PEPPER
8.1cm x 6.6cm
3.2" x 2.6"

88751 AV
BUTTER DISH
7.3cm W x 5.6cm D x 2.8cm H
2.9" W x 2.2" D x 1.1" H

88190 AV
OIL & VINEGAR DISH
8.6cm x 6.7cm
3.4" x 2.6"



88260 AV
CREAMER NO HANDLE - SMALL
6cl/2oz
6cm W x 4.8cm D x 5.3cm H
2.3" W x 1.9" D x 2.1" H

88360 AV
CREAMER NO HANDLE - LARGE
18.5cl/6.3oz
8.3cm W x 6.5cm D x 7.3cm H
3.3" W x 2.6" D x 2.9" H



ORA

FORIO

ORA

FORIO



88310 FO
CHARGER PLATE
33.5cm x 29.5cm/13.2" x 11.6"

88110SQ FO
DINNER PLATE
28.5cm x 25cm/11.2" x 9.8"

88810SQ FO
SALAD/DESSERT PLATE - LARGE
23cm x 20cm/9.1" x 7.9"

88510SQ FO
SALAD/DESSERT PLATE - MEDIUM
20cm x 17.5cm/7.9" x 6.9"



88740 FO
PASTA BOWL SMALL
26cm x 23cm/10.2" x 9.1"



88840 FO
LARGE NOODLE BOWL/SERVING BOWL
DIA : 21cm/8.3"
H : 8.3cm/3.3"



88640 FO
INDIVIDUAL SALAD BOWL
17cm W x 15cm D x 7cm H
6.7" W x 5.9" D x 2.8" H



88540 FO
SOUP/CEREAL/SMALL NOODLE BOWL
DIA : 13.5cm/5.3"
H : 6.9cm/2.7"



88210 FO
PLATTER LARGE
33cm x 23cm/13" x 9.1"



88910 FO
PLATTER MEDIUM
27cm x 19cm/10.6" x 7.5"



88710 FO
PLATTER SMALL
21.5cm x 15cm/8.5" x 5.9"



88920 FO
RIM SOUP/PASTA BOWL
24cm x 21cm/9.4" x 8.3"

ORA

FORIO



88501 FO
CAPPUCCINO CUP
40cl/13.5oz
DIA : 10.4cm/4.1"
H : 6.9cm/2.7"

88101 FO
TEA/COFFEE CUP
27.5cl/9.3oz
DIA : 9.7cm/3.8"
H : 6cm/2.4"

88301 FO
ESPRESSO CUP
9.5cl/3.2oz
DIA : 6.5cm/2.6"
H : 5cm/2"

88701 FO
MUG REGULAR
35cl/11.8oz
DIA : 9cm/3.3"
H : 10cm/3.7"

SAUCER :
88502 FO

SAUCER :
88502 FO

SAUCER :
88302 FO



88502 FO
TEA/COFFEE SAUCER
17cm/6.7"



88302 FO
ESPRESSO SAUCER
12.7cm/5"



88351 FO
TRIPLE DIVIDED DISH
11.4cm x 6.7cm
4.5" x 2.6"



88650 FO
DIVIDED DISH/OPEN SALT & PEPPER
8.6cm x 6.7cm
3.4" x 2.6"



88180 FO
SALT
8.1cm x 6.6cm
3.2" x 2.6"



88380 FO
PEPPER
8.1cm x 6.6cm
3.2" x 2.6"



88751 FO
BUTTER DISH
7.3cm W x 5.6cm D x 2.8cm H
2.9" W x 2.2" D x 1.1" H



88190 FO
OIL & VINEGAR DISH
8.6cm x 6.7cm
3.4" x 2.6"



88260 FO
CREAMER NO HANDLE - SMALL
6cl/2oz
6cm W x 4.8cm D x 5.3cm H
2.3" W x 1.9" D x 2.1" H



88360 FO
CREAMER NO HANDLE - LARGE
18.5cl/6.3oz
8.3cm W x 6.5cm D x 7.3cm H
3.3" W x 2.6" D x 2.9" H



ORA

ARICA

ARICA



88310 AR
CHARGER PLATE
33.5cm x 29.5cm/13.2" x 11.6"

88110SQ AR
DINNER PLATE
28.5cm x 25cm/11.2" x 9.8"

88810SQ AR
SALAD/DESSERT PLATE - LARGE
23cm x 20cm/9.1" x 7.9"

88510SQ AR
SALAD/DESSERT PLATE - MEDIUM
20cm x 17.5cm/7.9" x 6.9"



88740 AR
PASTA BOWL SMALL
26cm x 23cm/10.2" x 9.1"

88840 AR
LARGE NOODLE BOWL/SERVING BOWL
DIA : 21cm/8.3"
H : 8.3cm/3.3"

88640 AR
INDIVIDUAL SALAD BOWL
17cm W x 15cm D x 7cm H
6.7" W x 5.9" D x 2.8" H

88540 AR
SOUP/CEREAL/SMALL NOODLE BOWL
DIA : 13.5cm/5.3"
H : 6.9cm/2.7"



88210 AR
PLATTER LARGE
33cm x 23cm/13" x 9.1"

88910 AR
PLATTER MEDIUM
27cm x 19cm/10.6" x 7.5"

88710 AR
PLATTER SMALL
21.5cm x 15cm/8.5" x 5.9"

88920 AR
RIM SOUP/PASTA BOWL
24cm x 21cm/9.4" x 8.3"

ARICA



88501 AR
CAPPUCCINO CUP
40cl/13.5oz
DIA : 10.4cm/4.1"
H : 6.9cm/2.7"

88101 AR
TEA/COFFEE CUP
27.5cl/9.3oz
DIA : 9.7cm/3.8"
H : 6cm/2.4"

88301 AR
ESPRESSO CUP
9.5cl/3.2oz
DIA : 6.5cm/2.6"
H : 5cm/2"

88701 AR
MUG REGULAR
35cl/11.8oz
DIA : 9cm/3.3"
H : 10cm/3.7"

SAUCER :
88502 AR

SAUCER :
88502 AR

SAUCER :
88302 AR

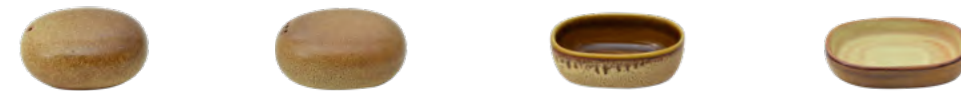


88502 AR
TEA/COFFEE SAUCER
17cm/6.7"

88302 AR
ESPRESSO SAUCER
12.7cm/5"

88351 AR
TRIPLE DIVIDED DISH
11.4cm x 6.7cm
4.5" x 2.6"

88650 AR
DIVIDED DISH/OPEN SALT & PEPPER
8.6cm x 6.7cm
3.4" x 2.6"



88180 AR
SALT
8.1cm x 6.6cm
3.2" x 2.6"

88380 AR
PEPPER
8.1cm x 6.6cm
3.2" x 2.6"

88751 AR
BUTTER DISH
7.3cm W x 5.6cm D x 2.8cm H
2.9" W x 2.2" D x 1.1" H

88190 AR
OIL & VINEGAR DISH
8.6cm x 6.7cm
3.4" x 2.6"



88260 AR
CREAMER NO HANDLE - SMALL
6cl/2oz
6cm W x 4.8cm D x 5.3cm H
2.3" W x 1.9" D x 2.1" H

88360 AR
CREAMER NO HANDLE - LARGE
18.5cl/6.3oz
8.3cm W x 6.5cm D x 7.3cm H
3.3" W x 2.6" D x 2.9" H



ORA

WOODWARE

ORA

WOODWARE



SWO-011118-ST54
ACACIA WOOD TRAY
FOR CUP, SUGAR AND CREAM
39cm x 22cm/15.4" x 8.7"



SWO-211218-TSC47
ACACIA WOOD TRAY/LONG APPETISER BOARD
FOR SUGAR AND CREAM
26cm x 13.5cm/10.2" x 5.3"



SWO-250618-WT46
ACACIA WOOD TRAY SMALL
FOR SALT AND PEPPER
16cm x 12.6cm/6.3" x 5.0"



SWO-011118-SB55
ACACIA WOOD SERVING TRAY
FOR DIP BOWL
40cm x 10.5cm/15.7" x 4.1"



SWO-250618-CP48
ACACIA WOOD CHARGER PLATE
34cm x 29.5cm/13.4" x 11.6"



SWO-011118-AB56
ACACIA WOOD APPETISER BOARD
16cm x 12.5cm/6.3" x 4.9"



SWO-011118-AB57
ACACIA WOOD SMALL APPETISER BOARD
11cm x 8.5cm/4.3" x 3.3"

ORA

WOODWARE



SWO-250618-RBW49
ACACIA WOOD ROUND BOWL
EXTRA LARGE STACKABLE
31cm/12.2"



SWO-271118-WBW60
ACACIA WOOD ROUND BOWL
LARGE STACKABLE
24cm/9.4"



SWO-250618-RBW50
ACACIA WOOD ROUND BOWL
MEDIUM STACKABLE
19cm/7.5"



SWO-271118-WBW61
ACACIA WOOD ROUND BOWL
SMALL STACKABLE
15cm/5.9"



SWO-011118-SBW58
ACACIA WOOD LARGE SHARING BOWL
34cm x 30cm/13.4" x 11.8"



SWO-011118-SBW59
ACACIA WOOD SMALL SHARING BOWL
24cm x 21cm/9.4" x 8.3"

BAKEWARE

Oven To Table

Sango Hospitality are proud to introduce our new Bakeware collection - designed by Studio Levien, London, England.

Eighteen carefully researched items have been designed to cover all catering requirements, from individual pie dishes to larger casseroles and serving sharing dishes.

All items are technically approved for use in ovens and to be taken directly to the table (see care instructions at the back of this brochure).

Available in our pure white resilient alumina body with high-sheen glaze.



OVEN TO TABLE



12840
ROUND EARED DISH 60cl/20.3oz
20.5cm W x 16.7cm D x 4.4cm H
8.1" W x 6.6" D x 1.7" H



12720
INDIVIDUAL OVAL EARED DISH 13cl/4.4oz
18.2cm W x 9.1cm D x 2.8cm H
7.2" W x 3.6" D x 1.1" H



12930
SMALL OVAL EARED DISH 27cl/9.1oz
22.9cm W x 11.3cm D x 3.4cm H
9" W x 4.4" D x 1.4" H



12120
MEDIUM OVAL EARED DISH 50cl/16.9oz
29.2cm W x 14.6cm D x 4.2cm H
11.5" W x 5.7" D x 1.7" H



12320
LARGE OVAL EARED DISH 85.5cl/28.9oz
33.3cm W x 16.2cm D x 4.6cm H
13.1" W x 6.4" D x 1.8" H



12820
SMALL RECTANGULAR BAKER 65cl/22oz
22.8cm W x 13.6cm D x 4.9cm H
9" W x 5.4" D x 1.9" H



12340
MEDIUM RECTANGULAR BAKER 200cl/67.6oz
34.7cm W x 20.2cm D x 5.9cm H
13.7" W x 8" D x 2.3" H



12520
LARGE RECTANGULAR BAKER 350cl/118.3oz
40cm W x 24.1cm D x 7cm H
15.8" W x 9.5" D x 2.8" H



12040
SQUARE BAKER 150cl/50.7oz
27cm W x 21.4cm D x 5.4cm H
10.7" W x 8.4" D x 2.1" H



12540
SQUARE BAKER 450cl/152.2oz
36.8cm W x 30.3cm D x 7cm H
14.5" W x 11.9" D x 2.8" H

OVEN TO TABLE



12420
ROUND RAMEKIN 18cl/6.1oz
DIA : 9cm/3.6"
H : 4.8cm/1.9"



12620
BALTI DISH 38cl/12.8oz
16.9cm W x 15.7cm D x 6.9cm H
6.7" W x 6.2" D x 2.7" H



12640
ROUND PIE DISH 42.5cl/14.4oz
DIA : 14.2cm/5.6"
H : 6cm/2.4"



12630
OVAL PIE DISH 43cl/14.5oz
16cm W x 12.6cm D x 6.2cm H
6.3" W x 5" D x 2.4" H



12020
ROUND PIE PLATE 80cl/27.1oz
DIA : 19.7cm/7.8"
H : 5cm/0.2"



12140
LOAF PAN 9.2cl/64.9oz
26.4cm W x 12.7cm D x 8.7cm H
10.4" W x 5" D x 3.4" H



12623/4
MINI SQUARE BAKER WITH LID
45cl/15.2oz
16.5cm W x 12.6cm D x 9cm H
6.5" W x 5" D x 3.6" H



12443/4
CASSEROLE WITH LID
450cl/152oz
37.2cm W x 23.6cm D x 14.3cm H
14.6" W x 9.3" D x 5.6" H



HOT - POT

OVEN TO TABLE



12190 WH
CHOPSTICK REST
5.2cm W x 4.4cm D x 1.2cm H
2.1" W x 1.7" D x 0.5" H



12290 WH
DUCK SPOON/CHOPSTICK REST
8.8cm W x 6.2cm D x 1.2cm H
3.5" W x 2.4" D x 0.5" H



12843/4 WH
HOT POT WITH LID
73cl/24.7oz
20.8cm W x 18.2cm D x 12.6cm H
8.2" W x 7.2" D x 5" H



12943/4 WH
LOW ROUND CASSEROLE WITH LID
86cl/20oz
21.3cm W x 18.4cm D x 9.6cm H
8.4" W x 7.3" D x 3.8" H



12190 BL
CHOPSTICK REST
5.2cm W x 4.4cm D x 1.2cm H
2.1" W x 1.7" D x 0.5" H



12290 BL
DUCK SPOON/CHOPSTICK REST
8.8cm W x 6.2cm D x 1.2cm H
3.5" W x 2.4" D x 0.5" H



12843/4 BL
HOT POT WITH LID
73cl/24.7oz
20.8cm W x 18.2cm D x 12.6cm H
8.2" W x 7.2" D x 5" H



12943/4 BL
LOW ROUND CASSEROLE WITH LID
86cl/29oz
21.3cm W x 18.4cm D x 9.6cm H
8.4" W x 7.3" D x 3.8" H



SWP-241019-BIS
ACACIA SMALL WOODEN TRAY
STACKABLE
28.5cm W x 21.5cm D x 2.6cm H
11.2" W x 8.5" D x 1" H



SWP-251019-BIL
ACACIA LARGE WOODEN TRAY
STACKABLE
33.3cm W x 24.2cm D x 2.6cm H
13.1" W x 9.5" D x 1" H



SWP-231019-BIS
ACACIA SMALL FOLDING
WOODEN RISER
28.5cm W x 17.5cm D x 12cm H
11.2" W x 6.9" D x 4.7" H



SWP-221019-BIL
ACACIA LARGE FOLDING
WOODEN RISER
45cm W x 17.5cm D x 12cm H
17.7" W x 6.9" D x 4.7" H



ENTERTAINMENT

ORA Canape Entertainment

For buffets, parties, canape presentation and pre-dinner drinks gatherings, Sango Hospitality's new Entertainment collection has been designed by Studio Levien, London, England.

The collection of 5 simple items provides pieces for individual portions to share amongst guests.

The profile shapes also provide excellent displays on buffets and show-piece table centres for a wide variety of food choices.

ORA CANAPE ENTERTAINMENT



88240
CANAPE CUP
6.3cm W x 6.4cm D x 5cm H
2.5" W x 2.5" D x 2" H



88320
PEBBLE BOWL
9cm W x 8.1cm D x 4.5cm H
3.6" W x 3.2" D x 1.8" H



88520
CANAPE PLATE
12.6cm W x 10.8cm D x 1.6cm H
5" W x 4.3" D x 0.6" H



88570
FISH BOWL
13.1cm W x 6.8cm D x 5.6cm H
5.2" W x 2.7" D x 2.2" H



88370
FISH SPOON
13.3cm W x 5cm D x 3.4cm H
5.2" W x 2" D x 1.3" H



88470
PEBBLE SPOON
14.1cm W x 4.8cm D x 4.7cm H
5.6" W x 1.9" D x 1.9" H



SWP-181019-B1
LONG SERVING TRAY ACACIA WOOD
60cm W x 13.2cm D x 2.4cm H
23.6" W x 5.2" D x 1" H



SWP-211019-B1
ACACIA WOOD STEMMED GLASS CARRIER
52.2cm W x 24.8cm D x 1.9cm H
20.6" W x 9.8" D x 0.7" H



SWP-191019-B1
ACACIA WOOD SERVING TRAY
49.7cm W x 38cm D x 3cm H
19.6" W x 15" D x 1.2" H



SWS-031019-B2/SWP-191019-B1
2 TIER ACACIA WOOD SERVING TRAY WITH CONE HOLDER/
2 TIER ACACIA WOOD SERVING TRAY
49.7cm W x 38cm D x 23.8cm H
19.6" W x 15" D x 9.4" H



SWS-021019-B2/SWP-191019-B1
2 TIER ACACIA WOOD SERVING TRAY WITH CONE HOLDER/
2 TIER ACACIA WOOD SERVING TRAY
49.7cm W x 38cm D x 23.8cm H
19.6" W x 15" D x 9.4" H



JAVA

Tableware

Java contains a range of selected items from the Classic shape collection.

Each item has been designed using the latest colour and glaze treatments by artisans in our factory. The result is a range of stunning colours and effects which can be mixed and matched with existing Classic whiteware or used alone for dazzling table settings and rustic, inventive food presentation.

The Java range is durable, with high edge chip resistivity and a high sheen glaze with a strong resistance to metal marking. The product is vitreous and complies with BS4034.



HORIZON BLUE



21710H HB COUPE PLATE 18cm/7.1"	36810 HB COUPE PLATE 20cm/7.9"	21910H HB COUPE PLATE 24cm/9.4"	36110 HB COUPE PLATE 26.4cm/10.4"	01270 HB COUPE PLATE 32.5cm/12.8"
--	---	--	--	--



36640 HB COUPE BOWL DIA : 16.8cm/6.6" H : 6cm/2.4"	36840 HB SALAD BOWL DIA : 22.5cm/8.9" H : 6cm/2.4"	01020H HB PASTA BOWL DIA : 25cm/9.8" H : 6cm/2.4"	17020H HB LARGE PASTA BOWL DIA : 28cm/11" H : 7cm/2.8"	67210H HB DEEP COUPE PLATE 30cm/11.9"
--	--	---	--	--



01301H HB TEACUP/SMALL CAPPUCCINO CUP 20cl/6.7oz DIA : 10cm/3.9" H : 5.8cm/2.3" SAUCER : 01602H HB	01601 HB BREAKFAST/LARGE CAPPUCCINO CUP 28cl/9.4oz DIA : 10.7cm/4.2" H : 6.7cm/2.6" SAUCER : 01602H HB	01101H HB ESPRESSO CUP 8cl/2.8oz DIA : 6.7cm/2.6" H : 6cm/2.4" SAUCER : 17102 HB	01401H HB COFFEE CUP 23cl/8oz DIA : 8cm/3.1" H : 9cm/3.5" SAUCER : 01202H HB	36401 HB MUG 34cl/11.5oz DIA : 8.5cm/3.1" H : 10.5cm/3.9"
---	---	---	---	--



01202H HB TEA/COFFEE SAUCER 15cm/5.9"	01602H HB UNIVERSAL SAUCER 15.7cm/6.2"	17102 HB ESPRESSO SAUCER 12.2cm/4.8"	01260H HB SOY SAUCE DISH/DIP POT DIA : 6.3cm/2.5" H : 3.5cm/1.4"	01301H TH HB SUGAR BOWL/DIP POT DIA : 10cm/3.9" H : 5.8cm/2.3"
--	---	---	--	--



01280H HB SALT DIA : 3.7cm/1.5" H : 7.5cm/3"	01380H HB PEPPER DIA : 3.7cm/1.5" H : 7.5cm/3"	01550H HB JUG 18cl/6.3oz DIA : 5cm/2" H : 8cm/3.1"	01561 HB SAUCE BOAT 19cl/6.7oz 18.5cm W x 6cm D x 5cm H 7.3" W x 2.4" D x 2" H	01663/4H HB TEAPOT 2CUP 46cl/16oz DIA : 11.3cm/4.4"
--	--	--	--	--

BARLEY CREAM



21710H BC COUPE PLATE 18cm/7.1"
36810 BC COUPE PLATE 20cm/7.9"
21910H BC COUPE PLATE 24cm/9.4"
36110 BC COUPE PLATE 26.4cm/10.4"
01270 BC COUPE PLATE 32.5cm/12.8"



36640 BC COUPE BOWL DIA : 16.8cm/6.6" H : 6cm/2.4"
36840 BC SALAD BOWL DIA : 22.5cm/8.9" H : 6cm/2.4"
01020H BC PASTA BOWL DIA : 25cm/9.8" H : 6cm/2.4"
17020H BC LARGE PASTA BOWL DIA : 28cm/11" H : 7cm/2.8"
67210H BC DEEP COUPE PLATE 30cm/11.9"



01301H BC TEACUP/SMALL CAPPUCCINO CUP 20cl/6.7oz DIA : 10cm/3.9" H : 5.8cm/2.3" SAUCER : 01602H BC
01601 BC BREAKFAST/LARGE CAPPUCCINO CUP 28cl/9.4oz DIA : 10.7cm/4.2" H : 6.7cm/2.6" SAUCER : 01602H BC
01101H BC ESPRESSO CUP 8cl/2.8oz DIA : 6.7cm/2.6" H : 6cm/2.4" SAUCER : 17102 BC
01401H BC COFFEE CUP 23cl/8oz DIA : 8cm/3.1" H : 9cm/3.5" SAUCER : 01202H BC
36401 BC MUG 34cl/11.5oz DIA : 8.5cm/3.1" H : 10.5cm/3.9"



01202H BC TEA/COFFEE SAUCER 15cm/5.9"
01602H BC UNIVERSAL SAUCER 15.7cm/6.2"
17102 BC ESPRESSO SAUCER 12.2cm/4.8"
01260H BC SOY SAUCE DISH/DIP POT DIA : 6.3cm/2.5" H : 3.5cm/1.4"
01301H TH BC SUGAR BOWL/DIP POT DIA : 10cm/3.9" H : 5.8cm/2.3"



01280H BC SALT DIA : 3.7cm/1.5" H : 7.5cm/3"
01380H BC PEPPER DIA : 3.7cm/1.5" H : 7.5cm/3"
01550H BC JUG 18cl/6.3oz DIA : 5cm/2" H : 8cm/3.1"
01561 BC SAUCE BOAT 19cl/6.7oz 18.5cm W x 6cm D x 5cm H 7.3" W x 2.4" D x 2" H
01663/4H BC TEAPOT 2CUP 46cl/16oz DIA : 11.3cm/4.4"

WOODLAND BROWN



21710H WB COUPE PLATE 18cm/7.1"
36810 WB COUPE PLATE 20cm/7.9"
21910H WB COUPE PLATE 24cm/9.4"
36110 WB COUPE PLATE 26.4cm/10.4"
01270 WB COUPE PLATE 32.5cm/12.8"



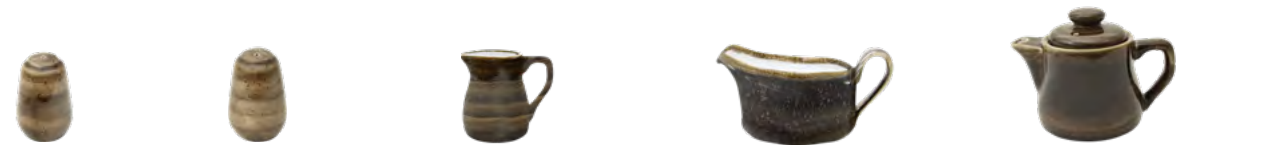
36640 WB COUPE BOWL DIA : 16.8cm/6.6" H : 6cm/2.4"
36840 WB SALAD BOWL DIA : 22.5cm/8.9" H : 6cm/2.4"
01020H WB PASTA BOWL DIA : 25cm/9.8" H : 6cm/2.4"
17020H WB LARGE PASTA BOWL DIA : 28cm/11" H : 7cm/2.8"
67210H WB DEEP COUPE PLATE 30cm/11.9"



01301H WB TEACUP/SMALL CAPPUCCINO CUP 20cl/6.7oz DIA : 10cm/3.9" H : 5.8cm/2.3" SAUCER : 01602H WB
01601 WB BREAKFAST/LARGE CAPPUCCINO CUP 28cl/9.4oz DIA : 10.7cm/4.2" H : 6.7cm/2.6" SAUCER : 01602H WB
01101H WB ESPRESSO CUP 8cl/2.8oz DIA : 6.7cm/2.6" H : 6cm/2.4" SAUCER : 17102 WB
01401H WB COFFEE CUP 23cl/8oz DIA : 8cm/3.1" H : 9cm/3.5" SAUCER : 01202H WB
36401 WB MUG 34cl/11.5oz DIA : 8.5cm/3.1" H : 10.5cm/3.9"



01202H WB TEA/COFFEE SAUCER 15cm/5.9"
01602H WB UNIVERSAL SAUCER 15.7cm/6.2"
17102 WB ESPRESSO SAUCER 12.2cm/4.8"
01260H WB SOY SAUCE DISH/DIP POT DIA : 6.3cm/2.5" H : 3.5cm/1.4"
01301H TH WB SUGAR BOWL/DIP POT DIA : 10cm/3.9" H : 5.8cm/2.3"



01280H WB SALT DIA : 3.7cm/1.5" H : 7.5cm/3"
01380H WB PEPPER DIA : 3.7cm/1.5" H : 7.5cm/3"
01550H WB JUG 18cl/6.3oz DIA : 5cm/2" H : 8cm/3.1"
01561 WB SAUCE BOAT 19cl/6.7oz 18.5cm W x 6cm D x 5cm H 7.3" W x 2.4" D x 2" H
01663/4H WB TEAPOT 2CUP 46cl/16oz DIA : 11.3cm/4.4"

SUNRISE YELLOW



21710H SY COUPE PLATE 18cm/7.1"
36810 SY COUPE PLATE 20cm/7.9"
21910H SY COUPE PLATE 24cm/9.4"
36110 SY COUPE PLATE 26.4cm/10.4"
01270 SY COUPE PLATE 32.5cm/12.8"



36640 SY COUPE BOWL DIA : 16.8cm/6.6" H : 6cm/2.4"
36840 SY SALAD BOWL DIA : 22.5cm/8.9" H : 6cm/2.4"
01020H SY PASTA BOWL DIA : 25cm/9.8" H : 6cm/2.4"
17020H SY LARGE PASTA BOWL DIA : 28cm/11" H : 7cm/2.8"
67210H SY DEEP COUPE PLATE 30cm/11.8"



01301H SY TEACUP/SMALL CAPPUCCINO CUP 20cl/6.7oz DIA : 10cm/3.9" H : 5.8cm/2.3" SAUCER : 01602H SY
01601 SY BREAKFAST/LARGE CAPPUCCINO CUP 28cl/9.4oz DIA : 10.7cm/4.2" H : 6.7cm/2.6" SAUCER : 01602H SY
01101H SY ESPRESSO CUP 8cl/2.8oz DIA : 6.7cm/2.6" H : 6cm/2.4" SAUCER : 17102 SY
01401H SY COFFEE CUP 23cl/8oz DIA : 8cm/3.1" H : 9cm/3.5" SAUCER : 01202H SY
36401 SY MUG 34cl/11.5oz DIA : 8.5cm/3.1" H : 10.5cm/3.9"



01202H SY TEA/COFFEE SAUCER 15cm/5.9"
01602H SY UNIVERSAL SAUCER 15.7cm/6.2"
17102 SY ESPRESSO SAUCER 12.2cm/4.8"
01260H SY SOY SAUCE DISH/DIP POT DIA : 6.3cm/2.5" H : 3.5cm/1.4"
01301H TH SY SUGAR BOWL/DIP POT DIA : 10cm/3.9" H : 5.8cm/2.3"



01280H SY SALT DIA : 3.7cm/1.5" H : 7.5cm/3"
01380H SY PEPPER DIA : 3.7cm/1.5" H : 7.5cm/3"
01550H SY JUG 18cl/6.3oz DIA : 5cm/2" H : 8cm/3.1"
01561 SY SAUCE BOAT 19cl/6.7oz 18.5cm W x 6cm D x 5cm H 7.3" W x 2.4" D x 2" H
01663/4H SY TEAPOT 2CUP 46cl/16oz DIA : 11.3cm/4.4"

MEADOW GREEN



21710H MG COUPE PLATE 18cm/7.1"
36810 MG COUPE PLATE 20cm/7.9"
21910H MG COUPE PLATE 24cm/9.4"
36110 MG COUPE PLATE 26.4cm/10.4"
01270 MG COUPE PLATE 32.5cm/12.8"



36640 MG COUPE BOWL DIA : 16.8cm/6.6" H : 6cm/2.4"
36840 MG SALAD BOWL DIA : 22.5cm/8.9" H : 6cm/2.4"
01020H MG PASTA BOWL DIA : 25cm/9.8" H : 6cm/2.4"
17020H MG LARGE PASTA BOWL DIA : 28cm/11" H : 7cm/2.8"
67210H MG DEEP COUPE PLATE 30cm/11.9"



01301H MG TEACUP/SMALL CAPPUCCINO CUP 20cl/6.7oz DIA : 10cm/3.9" H : 5.8cm/2.3" SAUCER : 01602H MG
01601 MG BREAKFAST/LARGE CAPPUCCINO CUP 28cl/9.4oz DIA : 10.7cm/4.2" H : 6.7cm/2.6" SAUCER : 01602H MG
01101H MG ESPRESSO CUP 8cl/2.8oz DIA : 6.7cm/2.6" H : 6cm/2.4" SAUCER : 17102 MG
01401H MG COFFEE CUP 23cl/8oz DIA : 8cm/3.1" H : 9cm/3.5" SAUCER : 01202H MG
36401 MG MUG 34cl/11.5oz DIA : 8.5cm/3.1" H : 10.5cm/3.9"



01202H MG TEA/COFFEE SAUCER 15cm/5.9"
01602H MG UNIVERSAL SAUCER 15.7cm/6.2"
17102 MG ESPRESSO SAUCER 12.2cm/4.8"
01260H MG SOY SAUCE DISH/DIP POT DIA : 6.3cm/2.5" H : 3.5cm/1.4"
01301H TH MG SUGAR BOWL/DIP POT DIA : 10cm/3.9" H : 5.8cm/2.3"



01280H MG SALT DIA : 3.7cm/1.5" H : 7.5cm/3"
01380H MG PEPPER DIA : 3.7cm/1.5" H : 7.5cm/3"
01550H MG JUG 18cl/6.3oz DIA : 5cm/2" H : 8cm/3.1"
01561 MG SAUCE BOAT 19cl/6.7oz 18.5cm W x 6cm D x 5cm H 7.3" W x 2.4" D x 2" H
01663/4H MG TEAPOT 2CUP 46cl/16oz DIA : 11.3cm/4.4"

AQUA BLUE



21710H AB
COUPE PLATE
18cm/7.1"
36810 AB
COUPE PLATE
20cm/7.9"
21910H AB
COUPE PLATE
24cm/9.4"
36110 AB
COUPE PLATE
26.4cm/10.4"
01270 AB
COUPE PLATE
32.5cm/12.8"



36640 AB
COUPE BOWL
DIA : 16.8cm/6.6"
H : 6cm/2.4"
36840 AB
SALAD BOWL
DIA : 22.5cm/8.9"
H : 6cm/2.4"
01020H AB
PASTA BOWL
DIA : 25cm/9.8"
H : 6cm/2.4"
17020H AB
LARGE PASTA BOWL
DIA : 28cm/11"
H : 7cm/2.8"
67210H AB
DEEP COUPE PLATE
30cm/11.8"



01301H AB
TEACUP/SMALL CAPPUCCINO CUP
20cl/6.7oz
DIA : 10cm/3.9"
H : 5.8cm/2.3"
01601 AB
BREAKFAST/LARGE CAPPUCCINO CUP
28cl/9.4oz
DIA : 10.7cm/4.2"
H : 6.7cm/2.6"
01101H AB
ESPRESSO CUP
8cl/2.8oz
DIA : 6.7cm/2.6"
H : 6cm/2.4"
01401H AB
COFFEE CUP
23cl/8oz
DIA : 8cm/3.1"
H : 9cm/3.5"
36401 AB
MUG
34cl/11.5oz
DIA : 8.5cm/3.1"
H : 10.5cm/3.9"

SAUCER :
01602H AB **SAUCER :**
01602H AB **SAUCER :**
17102 AB **SAUCER :**
01202H AB



01020H AB
TEA/COFFEE SAUCER
15cm/5.9"
01602H AB
UNIVERSAL SAUCER
15.7cm/6.2"
17102 AB
ESPRESSO SAUCER
12.2cm/4.8"
01260H AB
SOY SAUCE DISH/DIP POT
DIA : 6.3cm/2.5"
H : 3.5cm/1.4"
01301H TH AB
SUGAR BOWL/DIP POT
DIA : 10cm/3.9"
H : 5.8cm/2.3"



01280H AB
SALT
DIA : 3.7cm/1.5"
H : 7.5cm/3"
01380H AB
PEPPER
DIA : 3.7cm/1.5"
H : 7.5cm/3"
01550H AB
JUG 18cl/6.3oz
DIA : 5cm/2"
H : 8cm/3.1"
01561 AB
SAUCE BOAT 19cl/6.7oz
18.5cm W x 6cm D x 5cm H
7.3" W x 2.4" D x 2" H
01663/4H AB
TEAPOT 2CUP 46cl/16oz
DIA : 11.3cm/4.4"

EDEN GREEN



21710H EG
COUPE PLATE
18cm/7.1"
36810 EG
COUPE PLATE
20cm/7.9"
21910H EG
COUPE PLATE
24cm/9.4"
36110 EG
COUPE PLATE
26.4cm/10.4"
01270 EG
COUPE PLATE
32.5cm/12.8"



36640 EG
COUPE BOWL
DIA : 16.8cm/6.6"
H : 6cm/2.4"
36840 EG
SALAD BOWL
DIA : 22.5cm/8.9"
H : 6cm/2.4"
01020H EG
PASTA BOWL
DIA : 25cm/9.8"
H : 6cm/2.4"
17020H EG
LARGE PASTA BOWL
DIA : 28cm/11"
H : 7cm/2.8"
67210H EG
DEEP COUPE PLATE
30cm/11.9"



01301H EG
TEACUP/SMALL CAPPUCCINO CUP
20cl/6.7oz
DIA : 10cm/3.9"
H : 5.8cm/2.3"
01601 EG
BREAKFAST/LARGE CAPPUCCINO CUP
28cl/9.4oz
DIA : 10.7cm/4.2"
H : 6.7cm/2.6"
01101H EG
ESPRESSO CUP
8cl/2.8oz
DIA : 6.7cm/2.6"
H : 6cm/2.4"
01401H EG
COFFEE CUP
23cl/8oz
DIA : 8cm/3.1"
H : 9cm/3.5"
36401 EG
MUG
34cl/11.5oz
DIA : 8.5cm/3.1"
H : 10.5cm/3.9"

SAUCER :
01602H EG **SAUCER :**
01602H EG **SAUCER :**
17102 EG **SAUCER :**
01202H EG

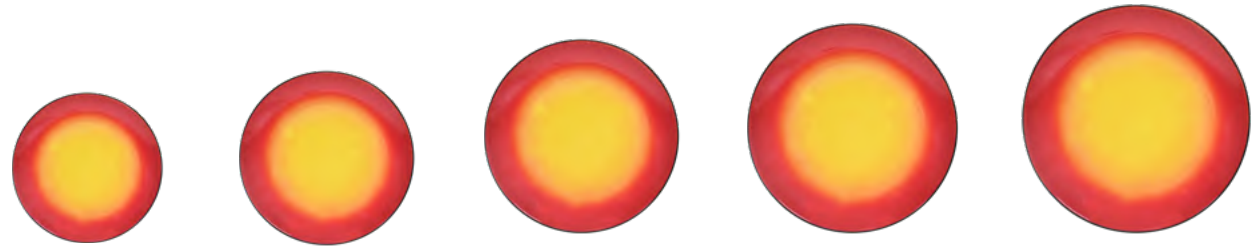


01020H EG
TEA/COFFEE SAUCER
15cm/5.9"
01602H EG
UNIVERSAL SAUCER
15.7cm/6.2"
17102 EG
ESPRESSO SAUCER
12.2cm/4.8"
01260H EG
SOY SAUCE DISH/DIP POT
DIA : 6.3cm/2.5"
H : 3.5cm/1.4"
01301H TH EG
SUGAR BOWL/DIP POT
DIA : 10cm/3.9"
H : 5.8cm/2.3"



01280H EG
SALT
DIA : 3.7cm/1.5"
H : 7.5cm/3"
01380H EG
PEPPER
DIA : 3.7cm/1.5"
H : 7.5cm/3"
01550H EG
JUG 18cl/6.3oz
DIA : 5cm/2"
H : 8cm/3.1"
01561 EG
SAUCE BOAT 19cl/6.7oz
18.5cm W x 6cm D x 5cm H
7.3" W x 2.4" D x 2" H
01663/4H EG
TEAPOT 2CUP 46cl/16oz
DIA : 11.3cm/4.4"

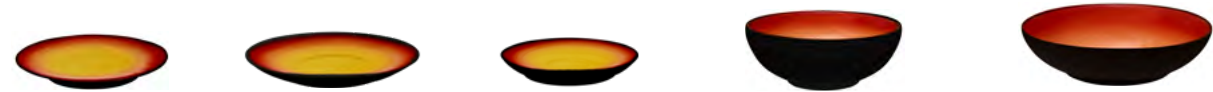
TOKYO RED



21710H TR
COUPE PLATE
18cm/7.1"
36810 TR
COUPE PLATE
20cm/7.9"
21910H TR
COUPE PLATE
24cm/9.4"
36110 TR
COUPE PLATE
26.4cm/10.4"
01270 TR
COUPE PLATE
32.5cm/12.8"



01301H TR
TEACUP/SMALL CAPPUCCINO CUP
20cl/6.7oz
DIA : 10cm/3.9"
H : 5.8cm/2.3"
SAUCER :
01602H TR
01601 TR
BREAKFAST/LARGE CAPPUCCINO CUP
28cl/9.4oz
DIA : 10.7cm/4.2"
H : 6.7cm/2.6"
SAUCER :
01602H TR
01101H TR
ESPRESSO CUP
8cl/2.8oz
DIA : 6.7cm/2.6"
H : 6cm/2.4"
SAUCER :
17102 TR
01401H TR
COFFEE CUP
23cl/8oz
DIA : 8cm/3.1"
H : 9cm/3.5"
SAUCER :
01202H TR
36401 TR
MUG
34cl/11.5oz
DIA : 8.5cm/3.1"
H : 10.5cm/3.9"

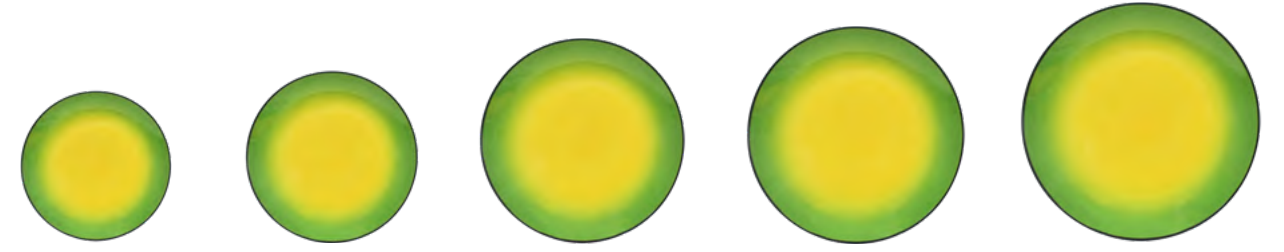


01202H TR
TEA/COFFEE SAUCER
15cm/5.9"
01602H TR
UNIVERSAL SAUCER
15.7cm/6.2"
17102 TR
ESPRESSO SAUCER
12.2cm/4.8"
36640 TR
COUPE BOWL
DIA : 16.8cm/6.6"
H : 6cm/2.4"
36840 TR
SALAD BOWL
DIA : 22.5cm/8.9"
H : 6cm/2.4"



01301H TH TR
SUGAR BOWL/DIP POT
DIA : 10cm/3.9"
H : 5.8cm/2.3"
01550H TR
JUG 18cl/6.3oz
DIA : 5cm/2"
H : 8cm/3.1"
01561 TR
SAUCE BOAT 19cl/6.7oz
18.5cm W x 6cm D x 5cm H
7.3" W x 2.4" D x 2" H
01663/4H TR
TEAPOT 2CUP 46cl/16oz
DIA : 11.3cm/4.4"

KYOTO GREEN



21710H KG
COUPE PLATE
18cm/7.1"
36810 KG
COUPE PLATE
20cm/7.9"
21910H KG
COUPE PLATE
24cm/9.4"
36110 KG
COUPE PLATE
26.4cm/10.4"
01270 KG
COUPE PLATE
32.5cm/12.8"



01301H KG
TEACUP/SMALL CAPPUCCINO CUP
20cl/6.7oz
DIA : 10cm/3.9"
H : 5.8cm/2.3"
SAUCER :
01602H KG
01601 KG
BREAKFAST/LARGE CAPPUCCINO CUP
28cl/9.4oz
DIA : 10.7cm/4.2"
H : 6.7cm/2.6"
SAUCER :
01602H KG
01101H KG
ESPRESSO CUP
8cl/2.8oz
DIA : 6.7cm/2.6"
H : 6cm/2.4"
SAUCER :
17102 KG
01401H KG
COFFEE CUP
23cl/8oz
DIA : 8cm/3.1"
H : 9cm/3.5"
SAUCER :
01202H KG
36401 KG
MUG
34cl/11.5oz
DIA : 8.5cm/3.1"
H : 10.5cm/3.9"



01202H KG
TEA/COFFEE SAUCER
15cm/5.9"
01602H KG
UNIVERSAL SAUCER
15.7cm/6.2"
17102 KG
ESPRESSO SAUCER
12.2cm/4.8"
36640 KG
COUPE BOWL
DIA : 16.8cm/6.6"
H : 6cm/2.4"
36840 KG
SALAD BOWL
DIA : 22.5cm/8.9"
H : 6cm/2.4"



01301H TH KG
SUGAR BOWL/DIP POT
DIA : 10cm/3.9"
H : 5.8cm/2.3"
01550H KG
JUG 18cl/6.3oz
DIA : 5cm/2"
H : 8cm/3.1"
01561 KG
SAUCE BOAT 19cl/6.7oz
18.5cm W x 6cm D x 5cm H
7.3" W x 2.4" D x 2" H
01663/4H KG
TEAPOT 2CUP 46cl/16oz
DIA : 11.3cm/4.4"

PLATTER

HORIZON BLUE



22810 HB
RECTANGULAR TRAY
21cm x 7.7cm
8.3" x 3"

22110 HB
RECTANGULAR TRAY
25cm x 10cm
9.8" x 3.9"

22130 HB
RECTANGULAR TRAY
34cm x 16cm
13.4" x 6.3"

BARLEY CREAM



22810 BC
RECTANGULAR TRAY
21cm x 7.7cm
8.3" x 3"

22110 BC
RECTANGULAR TRAY
25cm x 10cm
9.8" x 3.9"

22130 BC
RECTANGULAR TRAY
34cm x 16cm
13.4" x 6.3"

WOODLAND BROWN



22810 WB
RECTANGULAR TRAY
21cm x 7.7cm
8.3" x 3"

22110 WB
RECTANGULAR TRAY
25cm x 10cm
9.8" x 3.9"

22130 WB
RECTANGULAR TRAY
34cm x 16cm
13.4" x 6.3"

SUNRISE YELLOW



22810 SY
RECTANGULAR TRAY
21cm x 7.7cm
8.3" x 3"

22110 SY
RECTANGULAR TRAY
25cm x 10cm
9.8" x 3.9"

22130 SY
RECTANGULAR TRAY
34cm x 16cm
13.4" x 6.3"

MEADOW GREEN



22810 MG
RECTANGULAR TRAY
21cm x 7.7cm
8.3" x 3"

22110 MG
RECTANGULAR TRAY
25cm x 10cm
9.8" x 3.9"

22130 MG
RECTANGULAR TRAY
34cm x 16cm
13.4" x 6.3"

PLATTER

AQUA BLUE



22810 AB
RECTANGULAR TRAY
21cm x 7.7cm
8.3" x 3"

22110 AB
RECTANGULAR TRAY
25cm x 10cm
9.8" x 3.9"

22130 AB
RECTANGULAR TRAY
34cm x 16cm
13.4" x 6.3"

EDEN GREEN



22810 EG
RECTANGULAR TRAY
21cm x 7.7cm
8.3" x 3"

22110 EG
RECTANGULAR TRAY
25cm x 10cm
9.8" x 3.9"

22130 EG
RECTANGULAR TRAY
34cm x 16cm
13.4" x 6.3"

TOKYO RED



22810 TR
RECTANGULAR TRAY
21cm x 7.7cm
8.3" x 3"

22110 TR
RECTANGULAR TRAY
25cm x 10cm
9.8" x 3.9"

KYOTO GREEN



22810 KG
RECTANGULAR TRAY
21cm x 7.7cm
8.3" x 3"

22110 KG
RECTANGULAR TRAY
25cm x 10cm
9.8" x 3.9"



KADEN

Presentation Plate

Kaden presentation plates are designed with the chef in mind. The perfect shape for professional food presentation.

Kaden can be used alone or as part of buffet presentation as sharing plates to mix and match with Classic, Java or Ora.

WHITE
PRESENTATION PLATES



50540N3
PLATE TALL STACKABLE
DIA : 13cm/5.1"
H : 3.5cm/1.4"



50840N3
PLATE TALL STACKABLE
DIA : 20cm/7.9"
H : 4.2cm/1.7"



22110N3
PLATE TALL STACKABLE
DIA : 26cm/10.2"
H : 4.3cm/1.7"



50540N1
PLATE SHORT STACKABLE
DIA : 13cm/5.1"
H : 2cm/0.8"



50840N1
PLATE SHORT STACKABLE
DIA : 20cm/7.9"
H : 2cm/0.8"



22110N1
PLATE SHORT STACKABLE
DIA : 26cm/10.2"
H : 2.2cm/0.9"



50840N3/W WOODEN LID
PLATE TALL 20cm STACKABLE WITH WOODEN LID
LID HEIGHT : 2cm/0.8"



22110N3/W WOODEN LID
PLATE TALL 26cm STACKABLE WITH WOODEN LID
LID HEIGHT : 2cm/0.8"



RUSTIC COLOR
PRESENTATION PLATES

TABA



22110N1 TA

PLATE SHORT STACKABLE
DIA : 26cm/10.2"
H : 2.2cm/0.9"

50840N1 TA

PLATE SHORT STACKABLE
DIA : 20cm/7.9"
H : 2cm/0.8"

50540N1 TA

PLATE SHORT STACKABLE
DIA : 13cm/5.1"
H : 2cm/0.8"



22110N3 TA

PLATE TALL STACKABLE
DIA : 26cm/10.2"
H : 4.3cm/1.7"

50840N3 TA

PLATE TALL STACKABLE
DIA : 20cm/8"
H : 4.2cm/1.7"

AVOLA



22110N1 AV

PLATE SHORT STACKABLE
DIA : 26cm/10.2"
H : 2.2cm/0.9"

50840N1 AV

PLATE SHORT STACKABLE
DIA : 20cm/7.9"
H : 2cm/0.8"

50540N1 AV

PLATE SHORT STACKABLE
DIA : 13cm/5.1"
H : 2cm/0.8"



22110N3 AV

PLATE TALL STACKABLE
DIA : 26cm/10.2"
H : 4.3cm/1.7"

50840N3 AV

PLATE TALL STACKABLE
DIA : 20cm/8"
H : 4.2cm/1.7"

RUSTIC COLOR
PRESENTATION PLATES

FORIO



22110N1 FO

PLATE SHORT STACKABLE
DIA : 26cm/10.2"
H : 2.2cm/0.9"

50840N1 FO

PLATE SHORT STACKABLE
DIA : 20cm/7.9"
H : 2cm/0.8"

50540N1 FO

PLATE SHORT STACKABLE
DIA : 13cm/5.1"
H : 2cm/0.8"



22110N3 FO

PLATE TALL STACKABLE
DIA : 26cm/10.2"
H : 4.3cm/1.7"

50840N3 FO

PLATE TALL STACKABLE
DIA : 20cm/8"
H : 4.2cm/1.7"

ARICA



22110N1 AR

PLATE SHORT STACKABLE
DIA : 26cm/10.2"
H : 2.2cm/0.9"

50840N1 AR

PLATE SHORT STACKABLE
DIA : 20cm/7.9"
H : 2cm/0.8"

50540N1 AR

PLATE SHORT STACKABLE
DIA : 13cm/5.1"
H : 2cm/0.8"



22110N3 AR

PLATE TALL STACKABLE
DIA : 26cm/10.2"
H : 4.3cm/1.7"

50840N3 AR

PLATE TALL STACKABLE
DIA : 20cm/8"
H : 4.2cm/1.7"

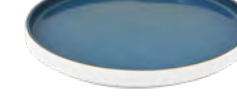
JAVA COLOR
PRESENTATION PLATES



50540N3 HB
HORIZON BLUE
PLATE TALL STACKABLE
DIA : 13cm/5.1"
H : 3.5cm/1.4"



50840N1 HB
HORIZON BLUE
PLATE SHORT STACKABLE
DIA : 20cm/7.9"
H : 2cm/0.8"



22110N1 HB
HORIZON BLUE
PLATE SHORT STACKABLE
DIA : 26cm/10.2"
H : 2.2cm/0.9"



50540N3 BC
BARLEY CREAM
PLATE TALL STACKABLE
DIA : 13cm/5.1"
H : 3.5cm/1.4"



50840N1 BC
BARLEY CREAM
PLATE SHORT STACKABLE
DIA : 20cm/7.9"
H : 2cm/0.8"



22110N1 BC
BARLEY CREAM
PLATE SHORT STACKABLE
DIA : 26cm/10.2"
H : 2.2cm/0.9"



50540N3 WB
WOODLAND BROWN
PLATE TALL STACKABLE
DIA : 13cm/5.1"
H : 3.5cm/1.4"



50840N1 WB
WOODLAND BROWN
PLATE SHORT STACKABLE
DIA : 20cm/7.9"
H : 2cm/0.8"



22110N1 WB
WOODLAND BROWN
PLATE SHORT STACKABLE
DIA : 26cm/10.2"
H : 2.2cm/0.9"



50540N3 SY
SUNRISE YELLOW
PLATE TALL STACKABLE
DIA : 13cm/5.1"
H : 3.5cm/1.4"



50840N1 SY
SUNRISE YELLOW
PLATE SHORT STACKABLE
DIA : 20cm/7.9"
H : 2cm/0.8"



22110N1 SY
SUNRISE YELLOW
PLATE SHORT STACKABLE
DIA : 26cm/10.2"
H : 2.2cm/0.9"



50540N3 MG
MEADOW GREEN
PLATE TALL STACKABLE
DIA : 13cm/5.1"
H : 3.5cm/1.4"



50840N1 MG
MEADOW GREEN
PLATE SHORT STACKABLE
DIA : 20cm/7.9"
H : 2cm/0.8"



22110N1 MG
MEADOW GREEN
PLATE SHORT STACKABLE
DIA : 26cm/10.2"
H : 2.2cm/0.9"



50540N3 AB
AQUA BLUE
PLATE TALL STACKABLE
DIA : 13cm/5.1"
H : 3.5cm/1.4"



50840N1 AB
AQUA BLUE
PLATE SHORT STACKABLE
DIA : 20cm/7.9"
H : 2cm/0.8"



22110N1 AB
AQUA BLUE
PLATE SHORT STACKABLE
DIA : 26cm/10.2"
H : 2.2cm/0.9"



50540N3 EG
EDEN GREEN
PLATE TALL STACKABLE
DIA : 13cm/5.1"
H : 3.5cm/1.4"



50840N1 EG
EDEN GREEN
PLATE SHORT STACKABLE
DIA : 20cm/7.9"
H : 2cm/0.8"



22110N1 EG
EDEN GREEN
PLATE SHORT STACKABLE
DIA : 26cm/10.2"
H : 2.2cm/0.9"



WHITE GRAIN

Presentation Tableware

The most subtle of designs in white-on-white providing a non-intrusive finish to any food display. Produced in our durable high-alumina body with a high-sheen transparent glaze, White Grain has a softly textured edge design, leaving the centre of each piece free for food presentation.



36810 WG
COUPE SIDE PLATE WHITE GRAIN
DIA : 20cm/7.9"
H : 2.5cm/1"



36110 WG
COUPE DINNER PLATE WHITE GRAIN
DIA : 27cm/10.6"
H : 3cm/1.2"



01270 WG
PIZZA PLATE WHITE GRAIN
DIA : 31.5cm/12.4"
H : 2.7cm/1.1"



01020H WG
PASTA BOWL WHITE GRAIN
DIA : 25cm/9.8"
H : 6cm/2.4"
CAPACITY : 40cl/13.5oz



36840 WG
SALAD BOWL WHITE GRAIN
DIA : 22.5cm/8.9"
H : 5.5cm/2.2"



36401 WG
MUG WHITE GRAIN
DIA : 8.5cm/3.3"
H : 10.5cm/4.1"



BLACK SLATE

Presentation Tableware

Black Slate contains a range of accessory items in our tough high alumina ceramic body with a semi-matt glaze over a soft textured surface, giving a slate effect. An ideal base for colourful food, Black Slate can be used alone or mixed with our new White Grain range for impressive table presentation.



17640SS
 CEREAL BOWL BLACK SLATE 61cl/20.6oz
 DIA : 14.5cm/5.7"
 H : 6.8cm/2.7"



36950SS
 DINNER BOWL BLACK SLATE 100cl/33.8oz
 DIA : 22.6cm/8.9"
 H : 5.1cm/2"



67810SS
 SALAD PLATE BLACK SLATE
 DIA : 21.8cm/8.6"
 H : 1.9cm/0.7"



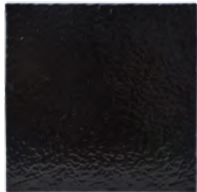
67110SS
 DINNER PLATE BLACK SLATE
 DIA : 27.2cm/10.7"
 H : 2.4cm/0.9"



40280SS
 RECTANGULAR SERVER MEDIUM
 30.5cm W x 12.1cm D x 0.7cm H
 12" W x 4.8" D x 0.3" H



40680SS
 RECTANGULAR SERVER LARGE
 40.4cm W x 12.2cm D x 0.7cm H
 15.9" W x 4.8" D x 0.3" H



40180SS
 SQUARE SERVER
 30.5cm W x 30.5cm D x 0.7cm H
 12" W x 12" D x 0.3" H

TABLE THEATRE

Acacia Woodware

Addressing the growing trend in innovative food presentation and buffet service, Table Theatre Acacia woodware contains items for every possible need. From buffet-risers, stackable crates and serving bowls to individual steak plates, drink trays and pizza boards.

Acacia wood is a renewable wood and is harvested out of necessity due to its naturally rapid growth. Acacia is a naturally waterproof hardwood with highly durable characteristics and an attractive colour and grain, ideal for food presentation and service.





Indonesia has the largest natural forest area, about 80 million hectares, in Asia and the third largest in the tropics. Therefore, it is necessary to ensure the wooden products sourced from Indonesia are produced from legally harvested wood.

All Sango woodware products comply with the Standards and Guidelines on Assessment of Performance in Sustainable Production Forest Management and Timber Legality Verification.

ACACIA

NATIVE TREE IN INDONESIA

Acacia is a tree which is easily recognised by its umbrella shaped canopy. Acacia is popular for its timber, can be found over much of South East Asia. It grows at a fast rate (0.75 to 1.5m annually) and it is also interplanted as a shade tree with other crops such as coffee or cocoa.

It can grow to around 25 metres high and the canopy will be wider than the height but in the last 15-20 years. Acacia trees have been cut leaving the root so that the tree sprouts again. It is therefore a fully sustainable plant.

Sango Acacia wood products are an attractive colour and grain with a smooth finish. The hardwood is very suitable for use in catering establishments for items such as cutting boards, serving and presentation items through to tables and chairs.

MANGO

NATIVE TREE IN INDIA MYANMAR AND EAST ASIA

Mango wood is derived from the mango tree. This is the same tree that produces the sweet fleshy fruit known as a mango. The Latin name is *mangifera indica*.

The mango tree is evergreen and grows to an average height of between 15 and 18 metres (50ft and 60ft).

Although, mango trees can now be found across the globe, they are native to India, Myanmar and East Asia. The tree is cultivated in most tropical climates due to the popularity its fruit.

The natural colour of mango wood is light to golden brown. However, mango wood is often beautifully discoloured due to 'spalting' — referring to the different colours wood can turn. This effect is desired by artisans who work with wood.

Spalted mango wood contains streaks of colour ranging from light beige to black, but also including green and yellow tones. Mango wood is also receptive to wood staining, which produces rich deep brown colours. Sango Hospitality mango woodware items are coated only with mineral oil and can vary in colour, adding to the appeal of the products. The smooth coated finish and reversible boards are highly suited for catering use.

FOOD SAFE

Table Theatre Woodware is coated with mineral oil, giving a food safe finish for presentation and food use.

We recommend hand wash only to maintain the unique wood colour and finish.

TABLE THEATRE

BUFFET ACACIA WOOD



SWQ-070418-B4S
NESTING TRAY - SMALL
39.7cm W x 25.8cm D x 5.2cm H
15.6" W x 10.2" D x 2.1" H



SWQ-070418-B4M
NESTING TRAY - MEDIUM
42.1cm W x 25.8cm D x 13.2cm H
16.6" W x 10.2" D x 5.2" H



SWQ-070418-B4L
NESTING TRAY - LARGE
44.6cm W x 25.9cm D x 23.5cm H
17.6" W x 10.2" D x 9.3" H



SWQ-070418-B4SET
NESTING TRAY SET
44.6cm W x 25.9cm D x 23.5cm H
17.6" W x 10.2" D x 9.3" H



SWR-130418-B3S
PATTISIER RISER - SMALL
24.9cm W x 21.2cm D x 8cm H
9.8" W x 8.4" D x 3.2" H



SWR-130418-B3M
PATTISIER RISER - MEDIUM
30cm W x 21cm D x 11cm H
11.8" W x 8.3" D x 4.3" H



SWR-130418-B3L
PATTISIER RISER - LARGE
35cm W x 21cm D x 14cm H
13.8" W x 8.3" D x 5.5" H



SWR-130418-B3XL
PATTISIER RISER - EXTRA LARGE
39.9cm W x 21cm D x 17cm H
15.7" W x 8.3" D x 6.7" H



SWR-130418-B3SET
PATTISIER RISER SET
39.9cm W x 21cm D x 17cm H
15.7" W x 8.3" D x 6.7" H



SWQ-010118-B4
ACACIA PRESENTATION CRATE
32cm W x 22cm D x 9cm H
12.6" W x 8.7" D x 3.5" H



SWP-090118-B1
ANTIPASTI PLATFORM
OVERALL : 37cm W x 12cm D x 13cm H
BOARD : 37cm W x 12cm D x 2cm H
FEET : 13cm W x 8cm D x 7cm H

OVERALL : 14.6" W x 4.7" D x 5.1" H
BOARD : 14.6 W x 4.7" D x 0.8" H
FEET : 5.1" W x 3.1" D x 2.8" H



SERVING BOARDS & PLATTERS
ACACIA WOOD



SWP-200418-B1
ACACIA BOARD WITH SLANTED HANDLE - SMALL
OVERALL : 35cm W x 19cm D x 1.8cm H
BOARD : 24cm W x 19cm D x 1.8cm H

OVERALL : 13.8" W x 7.5" D x 0.7" H
BOARD : 9.6" W x 7.5" D x 0.7" H



SWP-190418-B1
ACACIA BOARD WITH SLANTED HANDLE - MEDIUM
OVERALL : 34cm W x 24.8cm D x 1.8cm H
BOARD : 25cm W x 24.8cm D x 1.8cm H

OVERALL : 13.4" W x 9.8" D x 0.7" H
BOARD : 9.8" W x 9.8" D x 0.7" H



SWP-210418-B1
ACACIA BOARD WITH SLANTED HANDLE - LARGE
OVERALL : 50cm W x 20cm D x 1.8cm H
BOARD : 39cm W x 20cm D x 1.8cm H

OVERALL : 19.7" W x 7.9" D x 0.7" H
BOARD : 15.4" W x 7.9" D x 0.7" H



SWS-020915-B2S
ACACIA CRESCENT PADDLE - SMALL
OVERALL : 29cm W x 14cm D x 2cm H
BOARD : 20cm W x 13cm D x 2cm H

OVERALL : 11.4" W x 5.5" D x 0.8" H
BOARD : 7.9" W x 5.1" D x 0.8" H



SWS-020915-B2M
ACACIA CRESCENT PADDLE - MEDIUM
OVERALL : 36cm W x 18.7cm D x 2cm H
BOARD : 26cm W x 18cm D x 2cm H

OVERALL : 14.2" W x 7.4" D x 0.8" H
BOARD : 10.2" W x 7.1" D x 0.8" H



SWP-060118-B1 L
ACACIA STEAK BOARD WITH HANDLE
OVERALL : 42.5cm W x 20cm D x 2cm H
BOARD : 32.5cm W x 20cm D x 2cm H

OVERALL : 16.7" W x 7.9" D x 0.8" H
BOARD : 12.8" W x 7.9" D x 0.8" H



SWP-150418-B1
ACACIA HANDLED BOARD WITH CERAMIC SLATE TOP
OVERALL : 36cm W x 20.6cm D x 2cm H
BOARD : 25.5cm W x 20.6cm D x 2cm H
SLATE : 15cm W x 20cm D

OVERALL : 14.1" W x 8.1" D x 0.8" H
BOARD : 10" W x 8.1" D x 0.8" H
SLATE : 5.9" W x 7.9" D



SWP-130719-BIS
END GRAIN ACACIA WOOD CUTTING BOARD - SMALL
OVERALL : 40cm W x 30cm D x 5cm H
OVERALL : 15.7" W x 11.8" D x 1.9" H



SWP-130719-BIL
END GRAIN ACACIA WOOD CUTTING BOARD - LARGE
OVERALL : 61cm W x 41cm D x 5cm H
OVERALL : 24" W x 16.1" D x 1.9" H

SERVING BOARDS & PLATTERS
ACACIA WOOD



SWP-180418-B1
SQUARE ACACIA BOARD WITH HANDLE
OVERALL : 32.5cm W x 25cm D x 1.8cm H
BOARD : 25cm W x 25cm D x 1.8cm H

OVERALL : 12.8" W x 9.8" D x 0.7" H
BOARD : 9.8" W x 9.8" D x 0.7" H



SWP-071116-B1
OVAL ACACIA BOARD WITH HANDLE
OVERALL : 45cm W x 14cm D x 1.7cm H
BOARD : 37cm W x 14cm D x 1.7cm H

OVERALL : 17.7" W x 5.5" D x 0.7" H
BOARD : 14.6" W x 5.5" D x 0.7" H



SWRS-040118-B5
ACACIA PIZZA PADDLE - SMALL
OVERALL : 44.7cm W x 32cm D x 1.5cm H
BOARD : 32cm DIA x 1.5cm H

OVERALL : 17.6" W x 12.6" D x 0.6" H
BOARD : 12.6" DIA x 0.6" H



SWRS-120418-B5
ACACIA PIZZA PADDLE - LARGE
OVERALL : 45.9cm W x 35cm D x 1.8cm H
BOARD : 35cm DIA x 1.8cm H

OVERALL : 17.6" W x 12.6" D x 0.7" H
BOARD : 12.6" DIA x 0.7" H



SWP-240418-B1
DRINKS TASTER BOARD/DIP POT TRAY
OVERALL : 28cm W x 9cm D x 3cm H
WELL : 7cm DIA

OVERALL : 11" W x 3.5" D x 1.2" H
WELL : 2.8" DIA



SWP-120118-B1
MULTI PRESENTATION BOARD
OVERALL : 36cm W x 14cm D x 3cm H
WELL : 8cm DIA

OVERALL : 14.2" W x 5.5" D x 1.2" H
WELL : 3.1" DIA



SWP-080118-B1
ACACIA STEAK BOARD
34cm W x 22.2cm D x 2cm H
13.4" W x 8.7" D x 0.8" H



SWP-250418-B1
MULTI PURPOSE PRESENTATION/DIP BOARD
BOARD : 40cm W x 16.5cm D x 3cm H
WELL : 5cm DIA
BUTTER PAT (01160H) : 6.5cm DIA x 3cm H

BOARD : 15.8" W x 6.5" D x 1.2" H
WELL : 2" DIA
BUTTER PAT (01160H) : 2.6" DIA x 1.2" H

SERVING BOARDS & PLATTERS
ACACIA WOOD



SWRS-080517-B5S
KADEN LID - SMALL
DIA : 20.4cm/8"
H : 2cm/0.8"

SWRS-080517-B5L
KADEN LID - LARGE
DIA : 26cm/10.2"
H : 2cm/0.8"

SWRS-030118-B5
ROUND PLATTER/PIZZA PLATTER
32cm W x 32cm D x 2cm H
12.6" W x 12.6" D x 0.8" H



SWR-330916-B3S
SQUARE BOWL/RISER - SMALL
11.4cm W x 11.4cm D x 6.6cm H
4.5" W x 4.5" D x 2.6" H

SWR-330916-B3M
SQUARE BOWL/RISER - MEDIUM
16.8cm W x 16.8cm D x 8cm H
6.6" W x 6.6" D x 3.2" H

SWR-330916-B3L
SQUARE BOWL/RISER - LARGE
21cm W x 21cm D x 9.3cm H
8.3" W x 8.3" D x 3.7" H

SWR-330916-B3XL
SQUARE BOWL/RISER - EXTRA LARGE
25cm W x 25cm D x 10.3cm H
9.8" W x 9.8" D x 4.1" H



SWR-260916-B3S
STACKABLE SERVER - SMALL
15.2cm W x 15.2cm D x 7cm H
6" W x 6" D x 2.8" H

SWR-260916-B3M
STACKABLE SERVER - MEDIUM
20.3cm W x 20.3cm D x 7.1cm H
8" W x 8" D x 2.8" H

SWR-260916-B3L
STACKABLE SERVER - LARGE
25.4cm W x 25.4cm D x 7.1cm H
10" W x 10" D x 2.8" H



STACKABLE SERVER

SERVING BOARDS & PLATTERS
ACACIA WOOD



SWR-200418-B3
TRAY/RISER
34cm W x 20cm D x 10.5cm H
13.4" W x 7.9" D x 4.1" H

SWR-450916-B3
CERAMIC SLATE TRAY WITH WOODEN HANDLES
OVERALL : 36cm W x 25.5cm D x 6cm H
SLATE : 36cm W x 25.5cm D x 1cm H

OVERALL : 14.2" W x 10.0" D x 2.4" H
SLATE : 14.2" W x 10.0" D x 0.4" H



SWRS-050118-B5
CAKE STAND/RISER - SMALL
25cm W x 25cm D x 15.3cm H
9.8" H x 9.8" D x 6" H

SWRS-050118-B5L
CAKE STAND/RISER - LARGE
28cm W x 28cm D x 25cm H
11" H x 11" D x 9.8" H

SWRS-160418-B5
TWO TIER STAND
OVERALL : 25cm W x 25cm D x 25cm H
SMALL PLATE : 20cm DIA x 3cm H
LARGE PLATE : 25cm DIA x 3cm H

OVERALL : 9.8" W x 9.8" D x 9.8" H
SMALL PLATE : 7.9" DIA x 1.2" H
LARGE PLATE : 9.8" DIA x 1.2" H

TABLE THEATRE

ORGANIZERS

ACACIA WOOD



**SWRS-210418-B5
SPATULA HOLDER**
12cm W x 12cm D x 18.5cm H
4.7" W x 4.7" D x 7.3" H



**SWQ-120418-B4
MENU/NAPKIN AND UTENSIL HOLDER**
12.5cm W x 12.5cm D x 8cm H
4.9" W x 4.9" D x 3.2" H



**SWQ-140418-B4
NAPKIN HOLDER**
15cm W x 15cm D x 15cm H
5.9" W x 5.9" D x 5.9" H



**SWQ-150418-B4S
BASKET/UTENSIL BOX/
RISER - SMALL**
11cm W x 11cm D x 10.5cm H
4.3" W x 4.3" D x 4.1" H



**SWQ-150418-B4M
BASKET/UTENSIL BOX/
RISER - MEDIUM**
13cm W x 13cm D x 13cm H
5" W x 5" D x 5" H



**SWQ-130418-B4
DIVIDED CONDIMENT CRATE**
27cm W x 17cm D x 14cm H
10.6" W x 6.7" D x 5.5" H



**SWQ-020118-B4
PRESENTATION CUBE/RISER**
12cm W x 12cm D x 10cm H
4.7" W x 4.7" D x 3.9" H



**SWQ-100418-B4
CONDIMENT CRATE - SMALL**
14.5cm W x 13cm D x 16.4cm H
5.7" W x 5.1" D x 6.5" H



**SWQ-110418-B4
CONDIMENT CRATE - LARGE**
26cm W x 17cm D x 18.2cm H
10.2" W x 6.7" D x 7.1" H

TABLE THEATRE

MANGO WOOD



SWP-150919-B1M
3 DIP BOWL SET MEDIUM RUSTIC
45cm W x 14cm D x 2cm H
17.7" W x 5.5" D x 0.8" H



SWP-160919-B1M
4 DIP BOWL SET MEDIUM RUSTIC
55cm W x 14cm D x 2cm H
21.7" W x 5.5" D x 0.8" H



SWP-170919-B1L
LARGE PIZZA PLATTER WITH HANDLE
46cm W x 33cm D x 2cm H
18.1" W x 13" D x 0.8" H



METROPOLITAN

Cutlery / Flatware



The Sango Hospitality Metropolitan range of cutlery in fourteen designs is the result of extensive research.

From the standard ever popular traditional designs forged in high quality 18/0 material to more contemporary stylish patterns in mirror-finish 18/10 stainless steel.

The range contains every preference and are all proven sellers internationally.

CUTLERY / FLATWARE -18/10

AVAILABLE WORLDWIDE EXCLUDING THE USA



DL-RCH-1810-006
RICHARD
Table Fork : DL-RCH-1810-002
Dessert Fork : DL-RCH-1810-003
Table Knife : DL-RCH-1810-001
Tea Spoon : DL-RCH-1810-005
Dessert Spoon : DL-RCH-1810-004



DL-JMS-1810-006
JAMES
Table Fork : DL-JMS-1810-002
Dessert Fork : DL-JMS-1810-003
Table Knife : DL-JMS-1810-001
Tea Spoon : DL-JMS-1810-005
Dessert Spoon : DL-JMS-1810-004



DL-HLN-1810-006
HELENA
Table Fork : DL-HLN-1810-002
Dessert Fork : DL-HLN-1810-003
Table Knife : DL-HLN-1810-001
Tea Spoon : DL-HLN-1810-005
Dessert Spoon : DL-HLN-1810-004

CUTLERY / FLATWARE -18/10



DL-RTL-180-006
RATTAIL
Table Fork : DL-RTL-180-002
Dessert Fork : DL-RTL-180-003
Table Knife : DL-RTL-180-001
Tea Spoon : DL-RTL-180-005
Dessert Spoon : DL-RTL-180-004



DL-HLY-180-006
HARLEY
Table Fork : DL-HLY-180-002
Dessert Fork : DL-HLY-180-003
Table Knife : DL-HLY-180-001
Tea Spoon : DL-HLY-180-005
Dessert Spoon : DL-HLY-180-004



DL-KNG-180-006
KINGS
Table Fork : DL-KNG-180-002
Dessert Fork : DL-KNG-180-003
Table Knife : DL-KNG-180-001
Tea Spoon : DL-KNG-180-005
Dessert Spoon : DL-KNG-180-004

METROPOLITAN
CUTLERY / FLATWARE - 18/10

Available Worldwide Excluding the USA



DL-SVN-1810-006
SAVERN
Table Fork : DL-SVN-1810-002
Dessert Fork : DL-SVN-1810-003
Table Knife : DL-SVN-1810-001
Tea Spoon : DL-SVN-1810-005
Dessert Spoon : DL-SVN-1810-004



DL-PLP-1810-006
PHILIP
Table Fork : DL-PLP-1810-002
Dessert Fork : DL-PLP-1810-003
Table Knife : DL-PLP-1810-001
Tea Spoon : DL-PLP-1810-005
Dessert Spoon : DL-PLP-1810-004



DL-MGR-1810-006
MARGARET
Table Fork : DL-MGR-1810-002
Dessert Fork : DL-MGR-1810-003
Table Knife : DL-MGR-1810-001
Tea Spoon : DL-MGR-1810-005
Dessert Spoon : DL-MGR-1810-004



DL-GEO-1810-006
GEORGE
Table Fork : DL-GEO-1810-002
Dessert Fork : DL-GEO-1810-003
Table Knife : DL-GEO-1810-001
Tea Spoon : DL-GEO-1810-005
Dessert Spoon : DL-GEO-1810-004

METROPOLITAN
CUTLERY / FLATWARE - 18/10



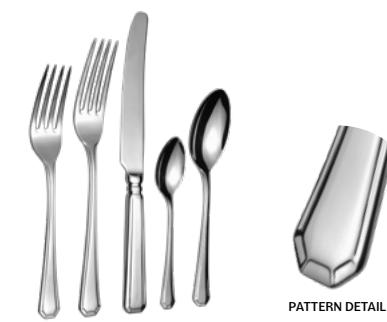
DL-DBY-180-006
DUBARRY
Table Fork : DL-DBY-180-002
Dessert Fork : DL-DBY-180-003
Table Knife : DL-DBY-180-001
Tea Spoon : DL-DBY-180-005
Dessert Spoon : DL-DBY-180-004



DL-BEA-180-006
BEAD
Table Fork : DL-BEA-180-002
Dessert Fork : DL-BEA-180-003
Table Knife : DL-BEA-180-001
Tea Spoon : DL-BEA-180-005
Dessert Spoon : DL-BEA-180-004



DL-JSO-180-006
JESMOND
Table Fork : DL-JSO-180-002
Dessert Fork : DL-JSO-180-003
Table Knife : DL-JSO-180-001
Tea Spoon : DL-JSO-180-005
Dessert Spoon : DL-JSO-180-004



DL-GCN-180-006
GRECIAN
Table Fork : DL-GCN-180-002
Dessert Fork : DL-GCN-180-003
Table Knife : DL-GCN-180-001
Tea Spoon : DL-GCN-180-005
Dessert Spoon : DL-GCN-180-004



URBAN

Cutlery / Flatware

The Sango hospitality Urban range of cutlery is available in 5 designs and is competitively priced.

Made from highly polished 18/0 stainless steel and a thickness of 2.2mm - 2.5mm.

Ideal for high volume environments

CUTLERY / FLATWARE -18/10



PATTERN DETAIL

DL-ATR-180-006
ATRIA

- Table Fork : DL-ATR-180-002
- Dessert Fork : DL-ATR-180-003
- Table Knife : DL-ATR-180-001
- Tea Spoon : DL-ATR-180-005
- Table Spoon : DL-ATR-180-004



PATTERN DETAIL

DL-BSE-180-006
BASE

- Table Fork : DL-BSE-180-002
- Dessert Fork : DL-BSE-180-003
- Table Knife : DL-BSE-180-001
- Tea Spoon : DL-BSE-180-005
- Table Spoon : DL-BSE-180-004



PATTERN DETAIL

DL-DUN-180-006
DUNE

- Table Fork : DL-DUN-180-002
- Dessert Fork : DL-DUN-180-003
- Table Knife : DL-DUN-180-001
- Tea Spoon : DL-DUN-180-005
- Table Spoon : DL-DUN-180-004



PATTERN DETAIL

DL-ECC-180-006
ECCO

- Table Fork : DL-ECC-180-002
- Dessert Fork : DL-ECC-180-003
- Table Knife : DL-ECC-180-001
- Tea Spoon : DL-ECC-180-005
- Table Spoon : DL-ECC-180-004



PATTERN DETAIL

DL-PHL-180-006
PHILADELPHIA

- Table Fork : DL-PHL-180-002
- Cake Fork : DL-PHL-180-003
- Table Knife : DL-PHL-180-001
- Tea Spoon : DL-PHL-180-005
- Table Spoon : DL-PHL-180-004



CARE GUIDE

CARING FOR CERAMICS

Our ceramic products are manufactured from the highest grade raw materials to withstand the rigours of everyday use in a catering environment. In normal use, they will retain their original sheen and beauty for many years.

Every piece is manufactured to very narrow tolerances of measurement including linear dimension, weight and capacity which is essential for space planning and uniformity.

Each product is of a guaranteed quality level and consistency having been inspected more than 15 times throughout the production process (AQL Quality Standard is available on request).

Each product conforms to the BS4034 (1990) British Standard Specification for Vitrified Hotelware, proving that the product will not craze and has porosity/water absorption below 0.2%.

- All sizes are approximate, as our production has a certain range that they can meet (e.g. not exact)
- Do not scrape excess food from ceramics with metal objects
- Ensure that cutlery/flatware is always washed separately to ceramics, whether by hand or in a dishwashing machine
- Stack plates on rubber/plastic mats on stainless steel surfaces
- Do not place ceramics on cold surfaces if items have been exposed to temperatures above 60°C/ 140°F
- Do not overfill dishwashing machines
- Do not stack different items together

ALL PRODUCTS ARE :



Edge chip resistant
(See Warranty)



Oven Safe
(Up to 200C/392F)



Craze Proof



Dishwasher Safe
(Standard detergents)



Freezer Safe



High Sheen Glaze



Microwave Safe
(Non-metallic designs)

CARING FOR ACACIA WOOD

Acacia is a tree which is easily recognised by its umbrella shaped canopy.

Acacia is popular for its timber, can be found over much of South East Asia. It grows at a fast rate (0.75 to 1.5m annually) and it is also interplanted as a shade tree with other crops such as coffee or cocoa.

It can grow to around 25 metres high and the canopy will be wider than the height but in the last 15-20 years Acacia trees have been cut leaving the root so that the tree sprouts again. It is therefore a fully sustainable plant.

Sango Acacia wood products are an attractive colour and grain with a smooth finish. The hardwood is very suitable for use in catering establishments for items such as cutting boards, serving and presentation items through to tables and chairs.

CARE & USE

All Sango Acacia woodware products have been sealed with a non-toxic protective mineral oil to enhance the appearance of the natural wood and to help prevent the absorption of water.

All sizes are approximate, as our production has a certain range that they can meet (e.g. not exact)

To clean, simply wipe over the surface with a damp cloth. Do not soak or put into a dishwasher.

As with all woodware, Acacia can dry out with use, so an occasional wipe with food safe wood oil does much to restore the original natural appearance.

CARING FOR CUTLERY

The relentless use of cutlery in catering establishments means that knives, forks and spoons can be washed dozens of times as well as being scraped against plates by customers. It is, therefore, essential that cutlery is maintained correctly in order to expand its lifespan. Choosing the correct cutlery can help. See below how to care for cutlery, avoid stains and diagnose any problems that may occur.

MECHANICAL SHOCK

The staining of stainless steel is a rare phenomenon and is usually caused by something becoming firmly deposited in the steel, with the right treatment this is not permanent and can easily be remedied with any metal polish. An easy mistake to make is to use a dip designed for removing tarnish from silver, this should be avoided at all costs, as chemicals contained within these dips will etch stainless steel. If a rainbow stain appears on your cutlery, it can usually be removed with lemon juice. Once the juice has been used, wash the cutlery and dry immediately.

RUSTING & PITTING

If this occurs with your cutlery, then it is not a sign of bad craftsmanship or poor-quality materials and some investigation needs to take place. Water is stainless steels' number one enemy, especially salt water or tap water with a high mineral content. Precautions to take are to ensure cutlery is not left to soak in water for long periods of time and to not submit stainless steel to a dishwashers rinse and hold cycle. Cutlery should be washed, rinsed thoroughly and wiped dry as soon as possible.

WASHING CUTLERY

In a dishwasher, put knives with their blades facing down in a separate compartment to the spoons and forks. In some areas, hard water may leave calcium spots, or certain foods and constant use of dishwasher may cause tarnishing; these stains may be removed using lemon juice, vinegar or a stainless-steel cleaner. Misuse or a fault within a dishwasher can cause corrosion or staining to even the highest grades of stainless steel. With regular dishwashing, scratching can occur on knife blades - this is a direct result of the mechanical action of the dishwasher and salt concentrate remaining on the flat surface area of the blade.

POLISHING CUTLERY

In order to keep the shine in stainless steel cutlery, remember to polish by using a soft cloth to remove surface water from the cutlery after washing. If for unforeseen circumstances water is allowed to dry on the cutlery, it is important that you remove the surface containments as soon as possible; do this by re-wetting with a very mild soapy water solution, rinse and polish immediately.









Sango®
HOSPITALITY